

# Silhouette Greens Trailers Owner's Manual

## Table of Contents

---

### 1. 2628A-1500LB.Capacity:

A. PARTS LIST.....	2	B.
ASSEMBLY DRAWING.....	3	C.
2641-1 CARLISE TIRE BEARING KIT.....	4	D.
2641-1-2 MARATHON TIRE BEARING KIT.....	5	

### 2. 2628A-2 1000 LB. Capacity:

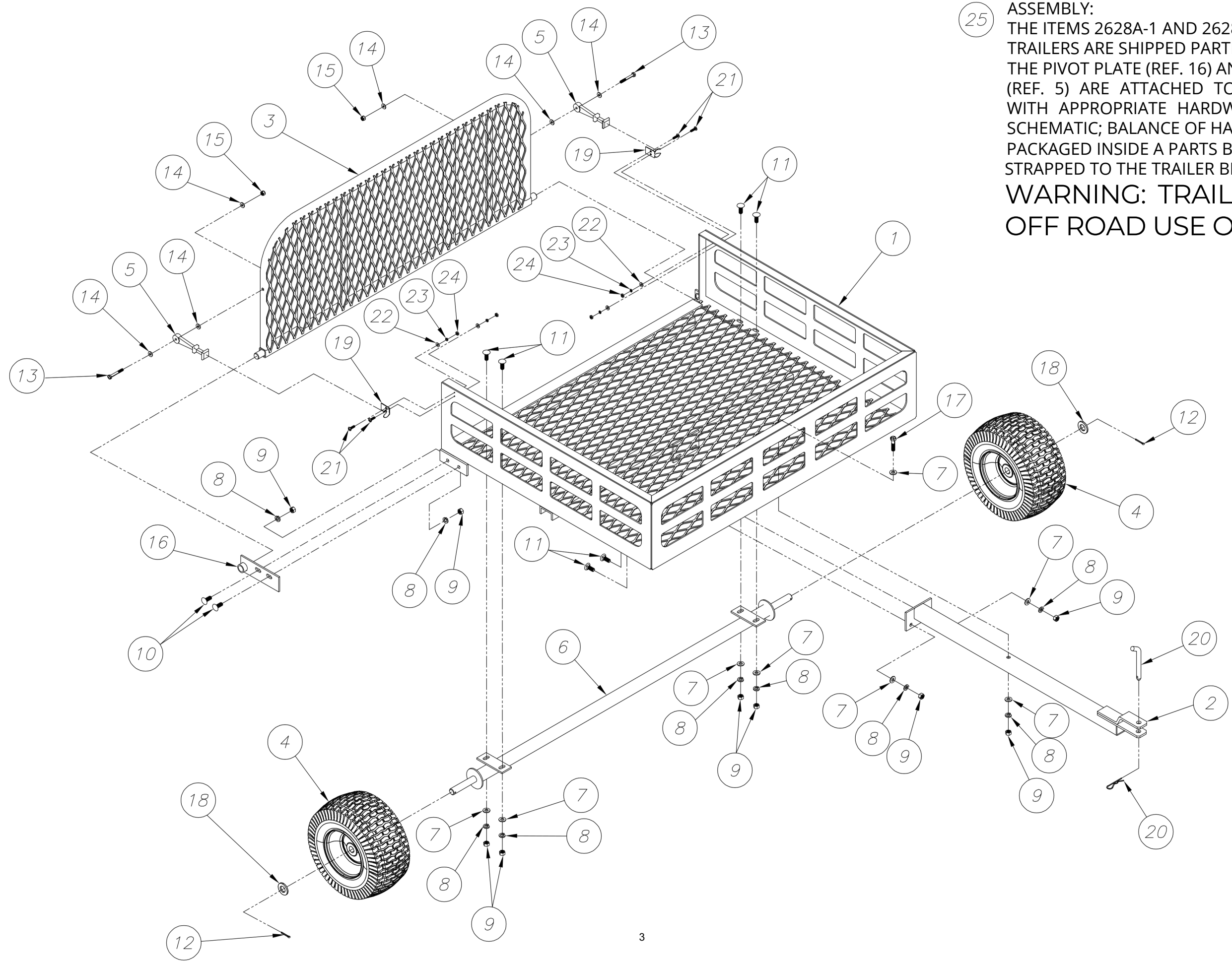
A. PARTS LIST.....	6	B.
ASSEMBLY DRAWING.....	7	C.
2641-2 MARATHON TIRE BEARING KIT.....	8	D.
2641-2-3 KENDRA TIRE BEARING KIT.....	9	

### 3. 2628A-3 2000 LB. Capacity:

A. AXLE ASSEMBLY PARTS LIST.....	10	
B. AXLE ASSEMBLY .....	11	
C. AXLE AND TONGUE ASSEMBLY PARTS LIST.....	12	
D. AXLE AND TONGUE ASSEMBLY .....	13	
E. FRONT AND SIDE EXTENSIONS ASSEMBLY PARTS LIST .....	14	
F. FRONT AND SIDE EXTENSIONS ASSEMBLY .....	15	
G. TAILGATE ASSEMBLY PARTS LIST .....	16	
H. TAILGATE ASSEMBLY .....	17	
I. 2641-2 MARATHON TIRE BEARING KIT .....	18	

**PARTS LIST FOR:**  
**SILHOUETTE GREENS TRAILER 2628A-1 500 LB CAPACITY**

REF.	QTY.	PART NUMBER	DESCRIPTION
1	1	BR11777	Trailer Weldment
2	1	BR11782	Tongue
3	1	BR11781 ZZ-	Tailgate
4	2	2628A-1 TIRE	13x6.50-6 TireW/Roller Bearing 3/4"
5	2	PPI-11786	Rubber Strap F/Greens Trailer Latch
6	1	BR11778 ZZFW-	3/4" Axle
7	8	38 ZZLW-38	Flat Washer, 3/8"
8	9	ZZHN-38 ZZ5CS-	Lock Washer, 3/8"
9	9	38X34 ZZ5CS-	Hex Nut, 3/8"
10	2	38X1 ZZM-5338	Carriage Screw Grade 5, 3/8" X 3/4"
11	6	ZHCS-14X2	Carriage Screw Grade 5, 3/8" X 1"
12	2	ZWFW-14	Cotter Pin, 1/8" X 1"
13	2	ZZULN-14	Hex Head Screw, 1/4" X 2"
14	6	BR11780 ZZHCS-	Flat Washer, 1/4"
15	2	38X212	Unitorque Lock Nut, 1/4"
16	1	ZZFWSAE-34	Hinge Pivot Plate (Bolt On)
17	1	MM1685A999	Hex Head Screw, 3/8" X 2 1/2"
18	2	SCB-10312ZD	Flat Washer, SAE 3/4"
19	2	ZZMS-10X34	Steel Latch Keeper, #371508617
20	1	ZZFW-8 ZZLW-	1/2" X 3" Bent Pin 60 Degree 4 3/4" Long
21	4	10 ZZHN-10-24	10-24 X 3/4" Round Head Slotted Machine Screw
22	4	REF.	Flat Washer, #8
23	4		Lock Washer, #10
24	4		Hex Nut, #10-24
25	1		See Note On Assembly Drawing



25 ASSEMBLY:  
THE ITEMS 2628A-1 AND 2628A-2 GREENS TRAILERS ARE SHIPPED PARTIALLY ASSEMBLED. THE PIVOT PLATE (REF. 16) AND LATCH ASSEMBLY (REF. 5) ARE ATTACHED TO TRAILER AND TAILGATE WITH APPROPRIATE HARDWARE AS SHOWN IN THE SCHEMATIC; BALANCE OF HARDWARE IS PACKAGED INSIDE A PARTS BOX WHICH IS STRAPPED TO THE TRAILER BED FOR SHIPMENT.  
**WARNING: TRAILERS ARE FOR OFF ROAD USE ONLY.**

**PARTS LIST FOR:**  
**2641-1 ROLLER BEARING KIT FOR CARLISE TIRE**

REF.	QTY.	PART NUMBER	DESCRIPTION
1	1	MT95336NA	3/4" I.D. X 1 3/8" O.D. X 2 1/4" Long Open Cage Roller Bearing
2	2	MT-RT-3414	3/4" I.D. X 1 3/8" O.D. Flange Type 1/4" Press Retainer

**PARTS LIST FOR:**  
**2641-1-2 BALL BEARING ROLLER KIT FOR MARATHON TIRE**

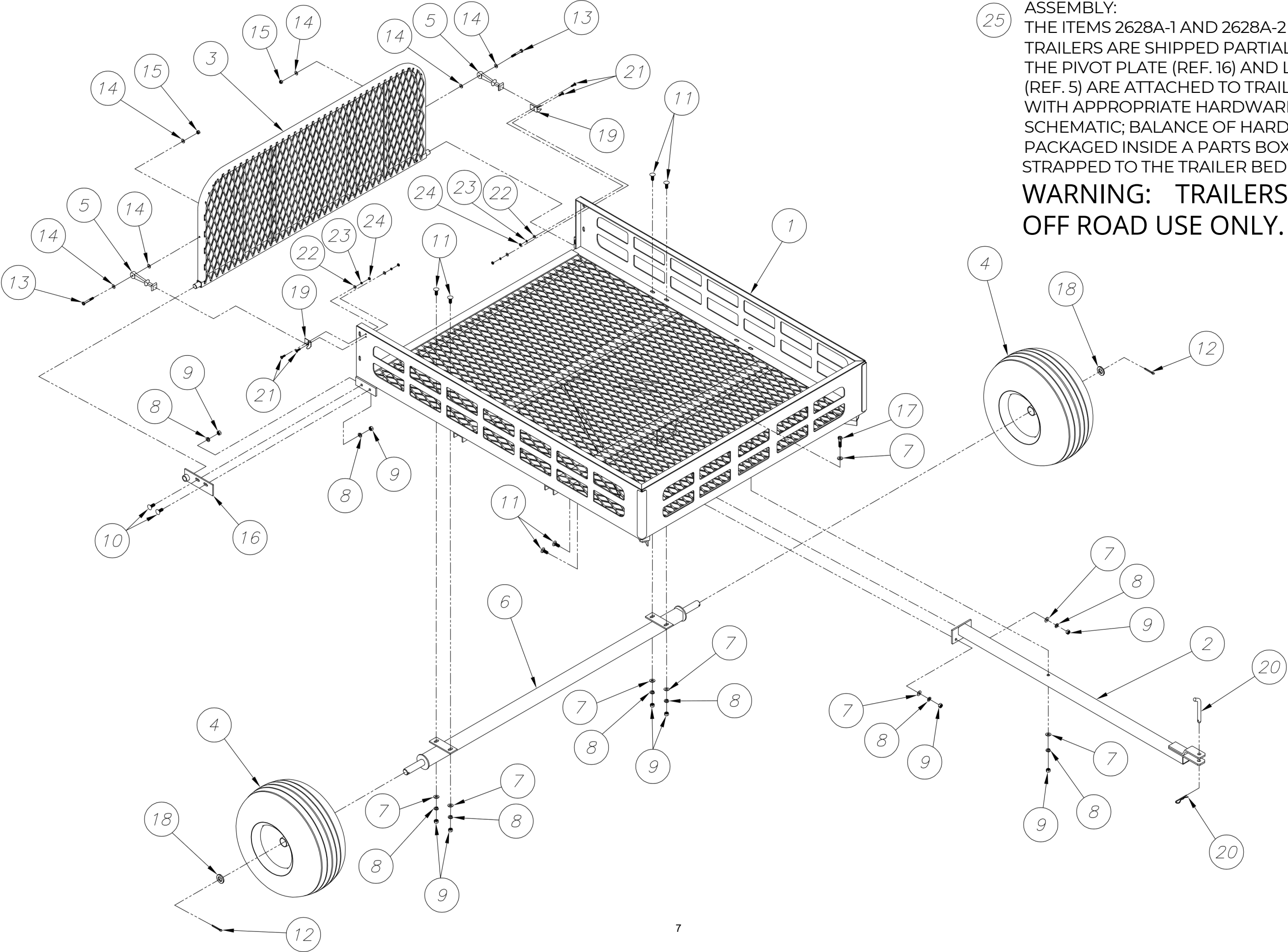
REF.	QTY.	PART NUMBER	DESCRIPTION
1	2	MAR-60011-PBB	3/4" I.D. X 1 3/8" O.D. X 2 1/4" Long Open Cage Roller Bearing

**PARTS LIST FOR:**  
**SILHOUETTE GREENS TRAILER 2628A-2 1000 LB CAPACITY**

REF.	QTY.	PART NUMBER	DESCRIPTION
1	1	BR11783	Trailer Weldment
2	1	BR11787	Tongue
3	1	BR11785 ZZ-	Tailgate
4	2	2628A-2 TIRE	18x850X8 4PLY Wheel, Roller Bearing 1"
5	2	PPI-11786	Rubber Strap F/Greens Trailer Latch
6	1	BR11784 ZZFW-	1" Axle
7	8	38 ZZLW-38	Flat Washer, 3/8"
8	9	ZZHN-38 ZZ5CS-	Lock Washer, 3/8"
9	9	38X34 ZZ5CS-	Hex Nut, 3/8"
10	2	38X1 ZZM-4218	Carriage Screw Grade 5, 3/8" X 3/4"
11	6	ZHCS-14X2	Carriage Screw Grade 5, 3/8" X 1"
12	2	ZWFW-14	Cotter Pin, 3/16" X 1 1/2"
13	2	ZZULN-14	Hex Head Screw, 1/4" X 2"
14	6	BR11780 ZZHCS-	Flat Washer, 1/4"
15	2	38X212	Unitorque Lock Nut, 1/4"
16	1	ZZFWSAE-1	Hinge Pivot Plate (Bolt On)
17	1	MM1685A999	Hex Head Screw, 3/8" X 2 1/2"
18	2	SCB-10312ZD	Flat Washer, SAE 1"
19	2	ZZMS-10X34	Steel Latch Keeper, #371508617
20	1	ZZFW-8 ZZLW-	1/2" X 3" Bent Pin 60 Degree 4 3/4" Long
21	4	10 ZZHN-10-24	10-24 X 3/4" Round Head Slotted Machine Screw
22	4	REF.	Flat Washer, #8
23	4		Lock Washer, #10
24	4		Hex Nut, #10-24
25	1		See Note On Assembly Drawing

25 ASSEMBLY:  
THE ITEMS 2628A-1 AND 2628A-2 GREENS TRAILERS ARE SHIPPED PARTIALLY ASSEMBLED. THE PIVOT PLATE (REF. 16) AND LATCH ASSEMBLY (REF. 5) ARE ATTACHED TO TRAILER AND TAILGATE WITH APPROPRIATE HARDWARE AS SHOWN IN THE SCHEMATIC; BALANCE OF HARDWARE IS PACKAGED INSIDE A PARTS BOX WHICH IS STRAPPED TO THE TRAILER BED FOR SHIPMENT.

**WARNING: TRAILERS ARE FOR OFF ROAD USE ONLY.**



**PARTS LIST FOR:**  
**2641-2 ROLLER BEARING KIT FOR MARATHON TIRE**

REF.	QTY.	PART NUMBER	DESCRIPTION
1	1	MT93540NA	1" I.D. X 1 3/8" O.D. X 2 1/2" Open Cage Bearing
2	2	MT-RT-114	1" I.D. X 1 3/8" O.D. Flange Type 1/4" Press Retainer

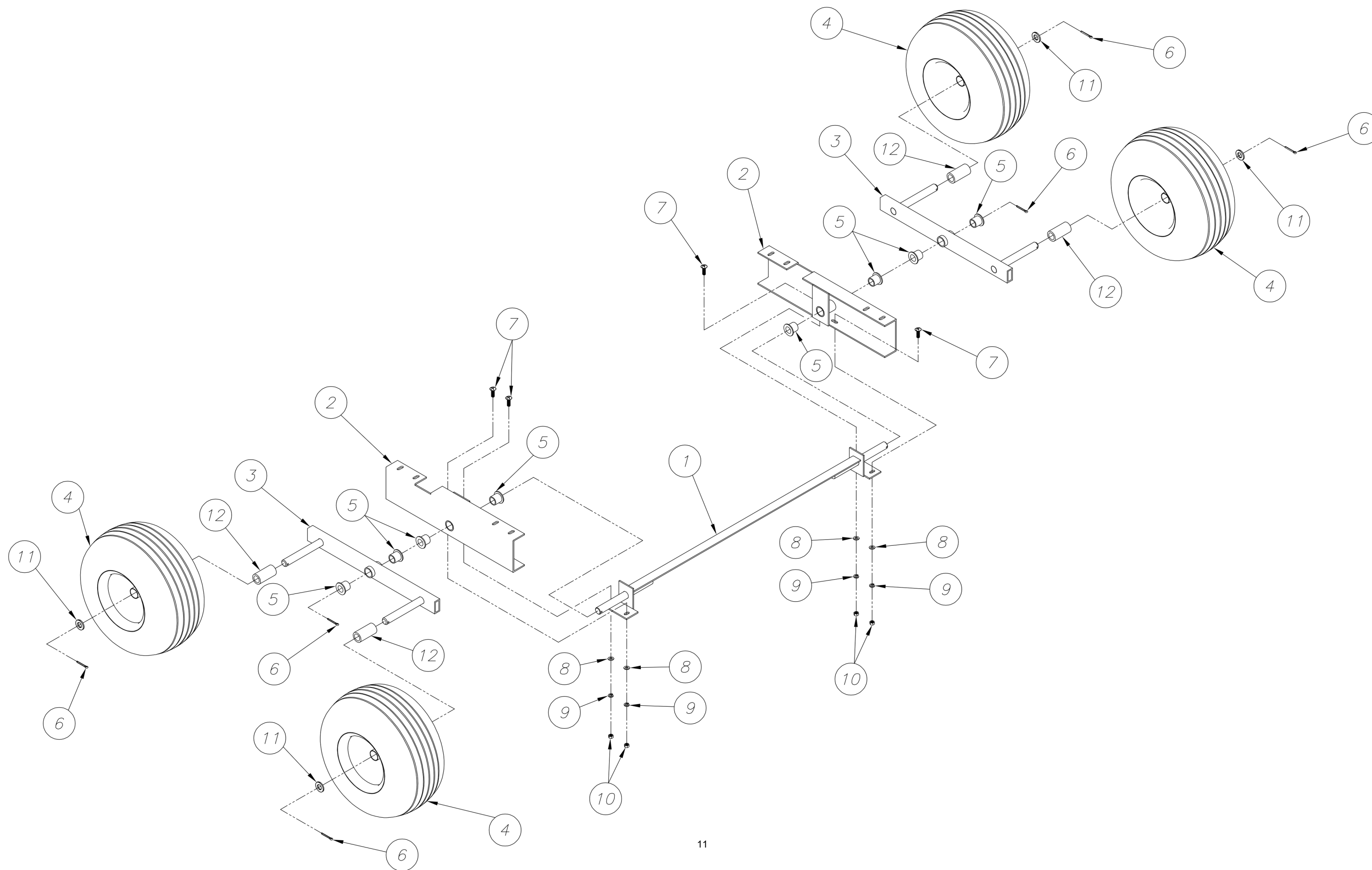


**PARTS LIST FOR:**  
**2641-2-3 ROLLER BEARING KIT FOR KENDRA TIRE**

REF.	QTY.	PART NUMBER	DESCRIPTION
1	1	MT93536NA	1" I.D. X 2 1/4" Open Cage Roller Bearing
2	2	MT-RT-114	1" I.D. X 1 3/8" O.D. Flange Type 1/4" Press Retainer

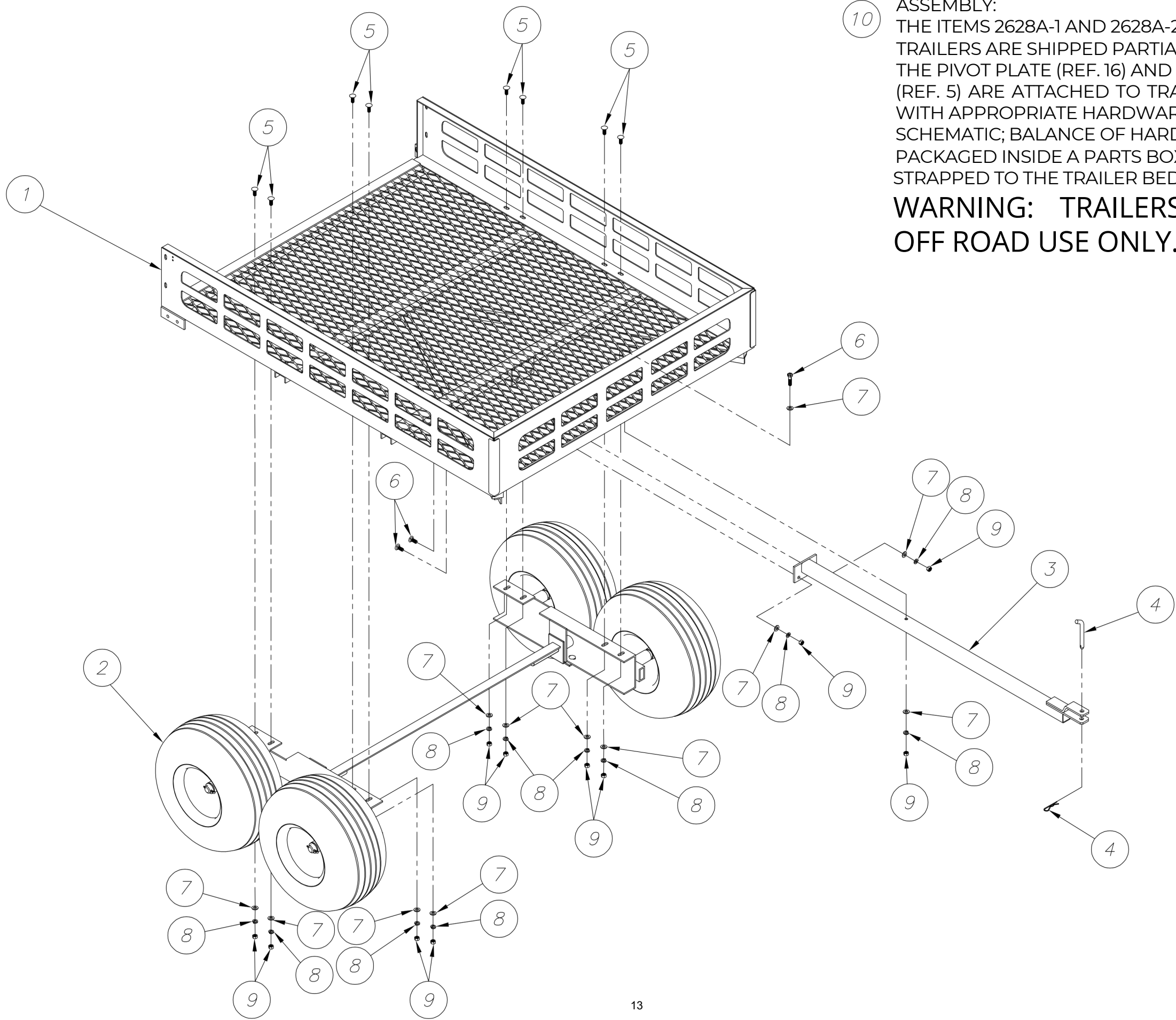
**PARTS LIST FOR:**  
**SILHOUETTE GREENS TRAILER 2628A-3 2000 LB CAPACITY AXLE ASSEMBLY**

REF.	QTY.	PART NUMBER	DESCRIPTION
1	1	BR14172	Axle Weldment
2	1	BR14171	Walker Mount
3	1	BR14168 ZZ-	Walker
4	4	2628A-2 TIRE	18x850X8 4PLY Wheel, Roller Bearing 1"
5	8	ZZFL-102-10	Flange 1.25 ODX1 ID Bronze Bushing
6	6	ZZM-4218	Cotter Pin, 3/16" X 1 1/2"
7	4	ZZ5CS-38X114	Carriage Screw Grade 5, 3/8" X 1 1/4"
8	4	ZZFW-38 ZZLW-	Flat Washer, 3/8"
9	4	38 ZZHN-38	Lock Washer, 3/8"
10	4	ZZFWSAE-1	Hex Nut, 3/8"
11	4	ZZFWSAE-1	Flat Washer, SAE 1"
12	4		Tire Outer Bushing



**PARTS LIST FOR:**  
**SILHOUETTE GREENS TRAILER 2628A-3 2000 LB CAPACITY**  
**AXLE AND TONGUE**

REF.	QTY.	PART NUMBER	DESCRIPTION
1	1	BR11783 REF.	Trailer Weldment
2	1	BR11787 SCB-	Axle Assembly
3	1	10312ZD	Tongue
4	1	ZZ5CS-38X1	1/2" X 3" Bent Pin 60 Degree 4 3/4" Long
5	8	ZZHCS-38X212	Carriage Screw Grade 5, 3/8" X 1"
6	1	ZZFW-38	Hex Head Screw, 3/8" X 2 1/2"
7	10	ZZLW-38 ZZHN-	Flat Washer, 3/8"
8	9	38 REF.	Lock Washer, 3/8"
9	9		Hex Nut, 3/8"
10	1		See Note On Assembly Drawing

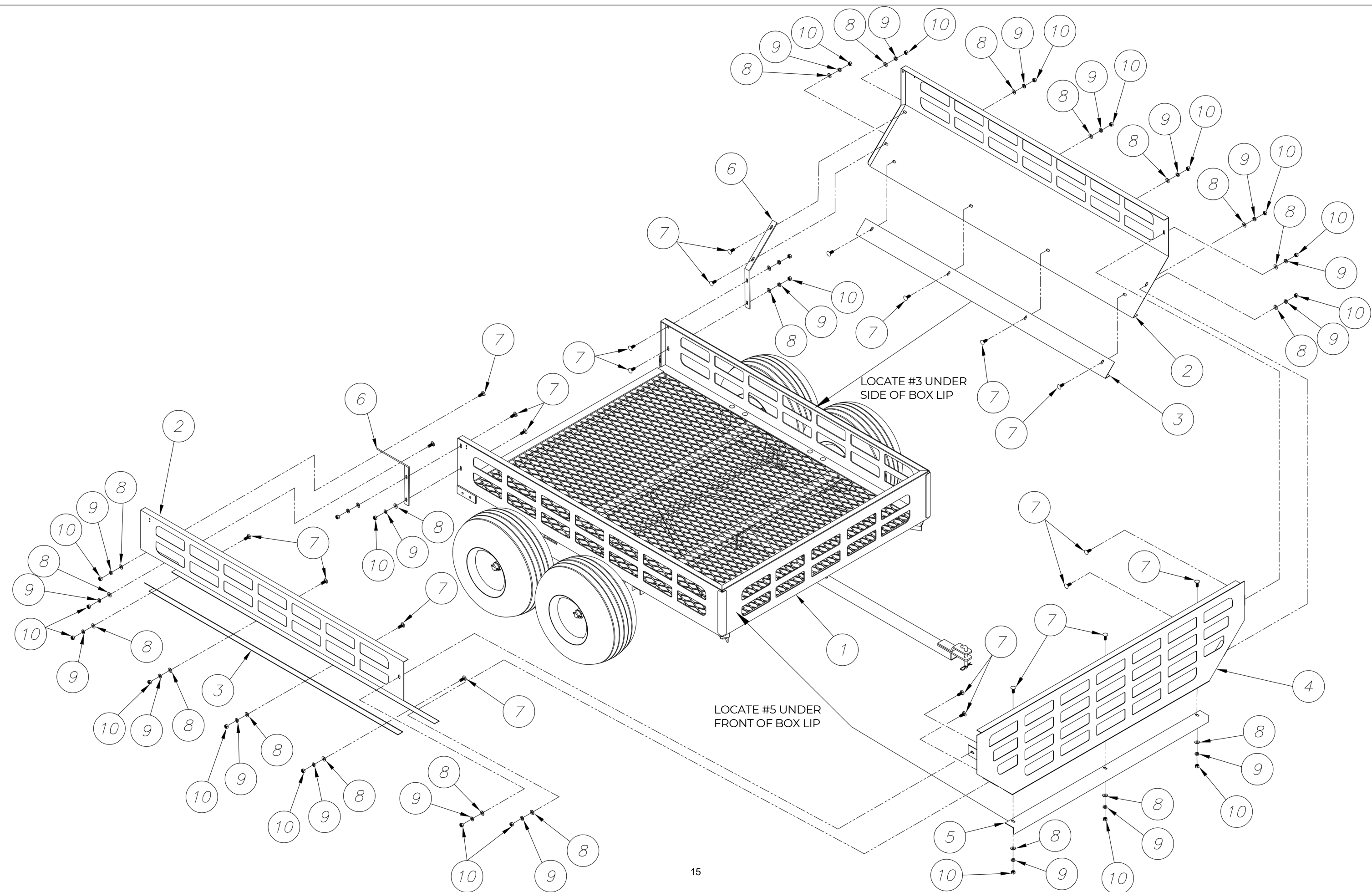


ASSEMBLY:  
THE ITEMS 2628A-1 AND 2628A-2 GREENS TRAILERS ARE SHIPPED PARTIALLY ASSEMBLED. THE PIVOT PLATE (REF. 16) AND LATCH ASSEMBLY (REF. 5) ARE ATTACHED TO TRAILER AND TAILGATE WITH APPROPRIATE HARDWARE AS SHOWN IN THE SCHEMATIC; BALANCE OF HARDWARE IS PACKAGED INSIDE A PARTS BOX WHICH IS STRAPPED TO THE TRAILER BED FOR SHIPMENT.

**WARNING: TRAILERS ARE FOR OFF ROAD USE ONLY.**

**PARTS LIST FOR:**  
**SILHOUETTE GREENS TRAILER 2628A-3 2000 LB CAPACITY**  
**FRONT AND SIDE EXTENSIONS**

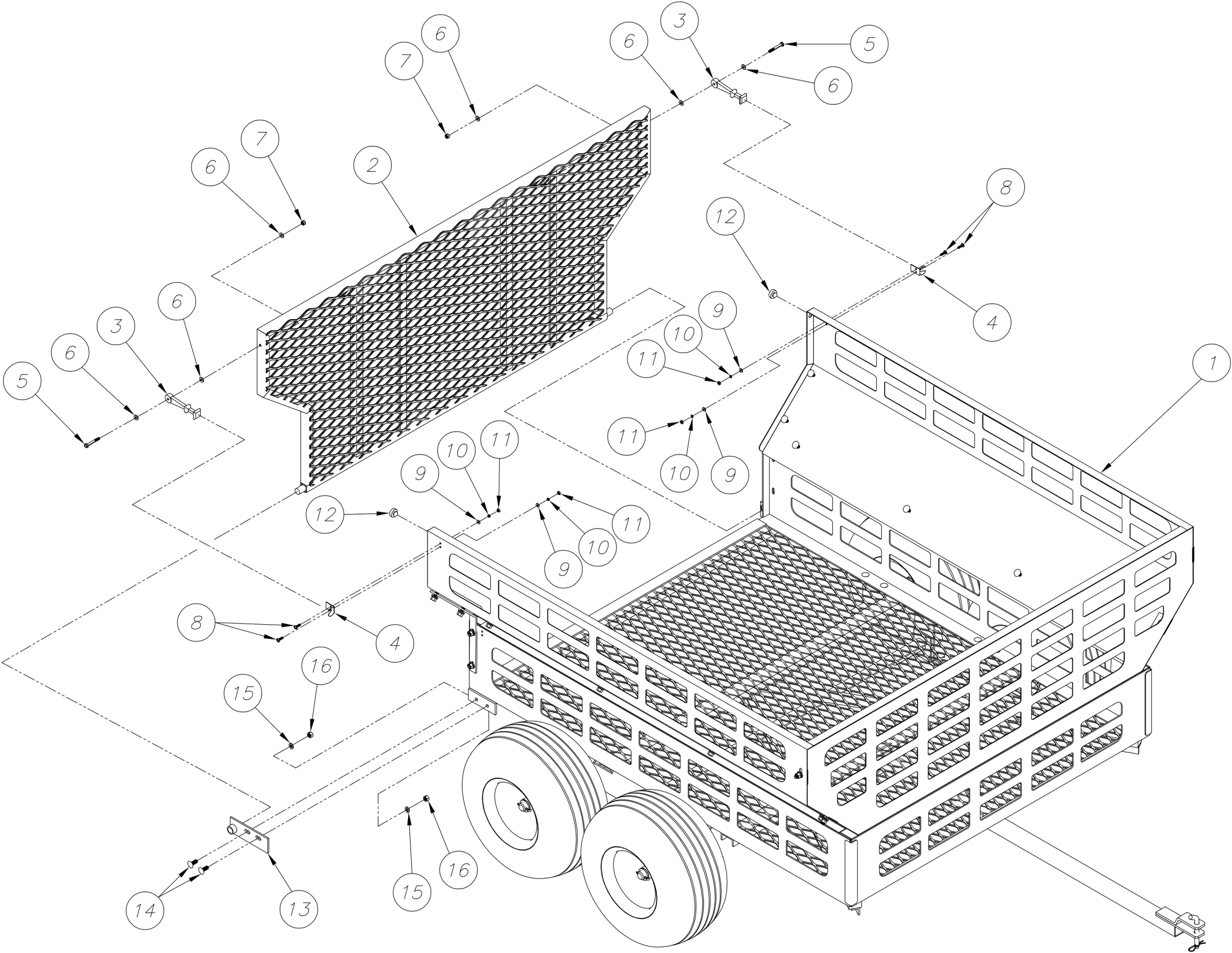
REF.	QTY.	PART NUMBER	DESCRIPTION
1	1	REF. BR14163	Axle & Tounge Assembly
2	2	BR14165	Side Panel For Trailer Extension
3	2	BR14162	Side Panel Clamps
4	1	BR14164	Front
5	1	BR14167	Front Panel Clamp
6	2	ZZ5CS-38X1	Brace Angle
7	23	ZZFW-38	Carriage Screw Grade 5, 3/8" X 1"
8	23	ZZLW-38 ZZHN-	Flat Washer, 3/8"
9	23	38	Lock Washer, 3/8"
10	23		Hex Nut, 3/8"



**PARTS LIST FOR:**  
**SILHOUETTE GREENS TRAILER 2628A-3 2000 LB CAPACITY TAILGATE**

REF.	QTY.	PART NUMBER	DESCRIPTION
1	1	REF. BR14166	Front and Side Extensions
2	1	PPI-11786	Tailgate
3	2	MM1685A999	Rubber Strap F/Greens Trailers Latch
4	2	ZHCS-14X2	Steel Latch Keeper, #371508617
5	2	ZZFW-14	Hex Head Screw, 1/4" X 2"
6	6	ZZULN-14	Flat Washer, 1/4"
7	2	ZZMS-10X34	Unitorque Lock Nut, 1/4"
8	4	ZZFW-8 ZZLW-	10-24 X 3/4" Round Head Slotted Machine Screw
9	4	10 ZZHN-10-24	Flat Washer, #8
10	4	CU810145	Lock Washer, #10
11	4	BR11780	Hex Nut, #10-24
12	2	ZZ5CS-38X34	Rubber Bumper
13	1	ZZLW-38 ZZHN-	Hinge Pivot Plate (Bolt On)
14	2	38	Carriage Screw Grade 5, 3/8" X 3/4"
15	2		Lock Washer, 3/8"
16	2		Hex Nut, 3/8"





**PARTS LIST FOR:**  
**2641-2 ROLLER BEARING KIT FOR MARATHON TIRE**

REF.	QTY.	PART NUMBER	DESCRIPTION
1	1	MT93540NA	1" I.D. X 1 3/8" O.D. X 2 1/2" Open Cage Bearing
2	2	MT-RT-114	1" I.D. X 1 3/8" O.D. Flange Type 1/4" Press Retainer