



MOVING WATER FORWARD, SINCE 1968

2026 PRICE CATALOG

60HZ RETAIL



PAR WEST

Fountains | Lighting | Circulators | De-icers | Surface Aerators | Diffused Aerators | Pond Probiotics | Accessories



MOVING WATER FORWARD

At Kasco, we help people realize the full potential of the water in their world. Our products are the most efficient and effective solutions for improving, protecting, and beautifying water.

OUR PEOPLE MAKE KASCO THE BEST IN THE BUSINESS

Superior customer service is in our DNA. From design and development to delivery and support, we provide an unwavering commitment to our customers.



COMPANY HISTORY

For more than 55 years, Kasco has set the industry benchmark for quality products, personalized service, and fast delivery. Learn more about our story below.



1968

Marina owner, Bill Skluzacek, developed a de-icing unit to prevent ice from damaging boats in the water over winter. His innovation catches the attention of marina-goers, and Kasco is born.

1980

Operations moved to a phone-switching building in St. Croix Beach, MN, and Kasco hired a full-time staff. This building was used as the main office for 15 years.

1988

Kasco traveled to Alaska with our De-icers to help rescue whales stuck underneath the ice. The De-icers were able to keep areas of ice open, allowing the whales to swim to safety. The story gained national media attention.

1988

The De-icer was modified by adding a float above the propeller, creating Kasco's first surface aerator.



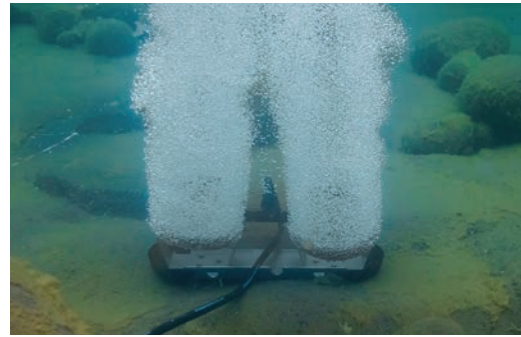
Above: Founder Bill Skluzacek (right) at the Afton Marina demonstrating an early De-icer unit.





1989

Kasco modified the surface aerator by adding a nozzle inside the float, creating our first floating fountains.



2010

Kasco introduced RobustAire™ Diffused Aeration Systems. 2022-2024 marked an extensive redesign of the product line.

2022

Kasco completed remodeling and expansion projects in 2007, 2013, and 2022, which grew our facility to nearly 100,000 sq. ft.



"As always, the staff at Kasco has been great to work with – from order placement to repairs, they have the answers you're looking for with quick turnaround to boot! Keep up the good work."

– MIKE





TABLE OF CONTENTS

Moving Water Forward.....2

Why Kasco.....3

Company History4

J Series Fountains.....8

 J Series Premium Nozzles.....16

VFX Series Fountains18

WaterGlow Lighting22

 Lighting Selection Guide23

 RGB LED24

 Composite LED.....26

 Stainless Steel LED.....28

 RGBW4030

AquatiClear™ Circulators32

De-icers36

Surface Aerators40

RobustAire™ Diffused Aeration Systems46

 RobustAire System Comparison51

Home Series Diffused Aeration Systems52

 Home Series & Small Cabinet System Comparison55

Diffused Aeration Accessories.....56

Compressors57

Pond Probiotics.....58

Accessories60

 Unit Mounting Options61

 Control Panels.....62

 Extras – Anodes, Props, & More.....63

Warranty Information64

Warranty Periods & Distributor Tools65

MAP, Product Return, & Repair66

Shipping & Patents67



*2HP J Series Fountain
with Spruce Pattern*

J SERIES

Elegant Fountain Displays

Kasco J Series Fountains offer dramatic, aesthetically pleasing displays at the best value on the market. Designed with both beauty and function in mind, each package includes multiple twist-and-lock nozzles at no extra charge, allowing you to choose patterns ranging from attention-demanding geysers to elegant 3-tier displays.



Packages include motor unit, 1-piece float, bottom screen, mooring ropes, power cord, display nozzles, and control panel with human-rated, GFCI-protection.

Available in 3/4 - 7.5HP sizes and single and three phase options to fit virtually any application.

Complete packages are ETL Listed to UL and CSA standards for safety.



5 Display
Patterns **Included**



Impressive
Heights & Widths



Easily Change
Nozzles



Snap-on
Lights Available



3/4HP & 1HP

J SERIES FOUNTAINS

- 120V and 208-240V, single phase options
- 1-piece float blends in with water's surface and is easy to install
- Composite bottom screen helps prevent clogging
- Premium Nozzles available separately (see pages 16-17)
- Manage from shore with included human-rated, GFCI-protected control panel



5 Patterns Included*



Shallow Operating
Depths**



Lighting Packages
Available



2-Year Warranty



ETL Listed to UL
& CSA Standards

HP	CORD LENGTH	50 FT	100 FT	150 FT	200 FT	250 FT	300 FT	400 FT	500+ FT
120V, SINGLE PHASE PACKAGES									
3/4	PART NUMBER	3400JF050	3400JF100	3400JF150	3400JF200	-	-	-	-
	MSRP	\$2,116	\$2,309	\$2,910	\$3,179	-	-	-	-
1	PART NUMBER	4400JF050	4400JF100	4400JF150	4400JF200	-	-	-	-
	MSRP	\$2,550	\$3,147	\$3,733	\$4,086	-	-	-	-
208-240V, SINGLE PHASE PACKAGES									
3/4	PART NUMBER	3400HJF050	3400HJF100	3400HJF150	3400HJF200	3400HJF250	3400HJF300	3400HJF400	3400HJF500
	MSRP	\$4,245	\$4,408	\$5,186	\$5,433	\$5,543	\$5,672	\$6,266	Inquire
1	PART NUMBER	4400HJF050	4400HJF100	4400HJF150	4400HJF200	4400HJF250	4400HJF300	4400HJF400	4400HJF500
	MSRP	\$4,770	\$4,935	\$5,766	\$6,029	\$6,294	\$6,424	\$6,562	Inquire

*Packages come with 4 twist-and-lock nozzles (Cypress, Linden, Sequoia, and Birch). The Willow pattern is achieved by operating the fountain without a nozzle.

**3/4HP units operate in as little as 17.5 in. of water. 1HP units operate in as little as 19 in. of water.

Product Notes:

1. Prices in bold have quick disconnect installed on power cords.
2. 3/4 and 1HP, 120V single phase options include C-25 control panel.
3. 3/4 and 1HP, 208-240V single phase options include C-85 control panel.



NEVER enter the water with
electrical equipment connected
and / or in operation.



CYPRESS

3/4HP	7 ft. H X 17 ft. W
1HP	9 ft. H X 28 ft. W



LINDEN

3/4HP	9 ft. H X 29 ft. W
1HP	12 ft. H X 31 ft. W



WILLOW

3/4HP	6.5 ft. H X 21 ft. W
1HP	9 ft. H X 31 ft. W



SEQUOIA

3/4HP	13 ft. H X 8 ft. W
1HP	18 ft. H X 11 ft. W



BIRCH

3/4HP	7 ft. H X 5 ft. W
1HP	11 ft. H X 8 ft. W

2HP & 3HP

J SERIES FOUNTAINS

- 208-240V, single and three phase options
- 1-piece float blends in with water's surface and is easy to install
- Stainless steel components provide increased performance and longevity
- Premium Nozzles available separately (see pages 16-17)
- Manage from shore with included human-rated, GFCI-protected control panel



5 Patterns Included*



Shallow Operating
Depths**



Lighting Packages
Available



3-Year Warranty - 2HP Units***
5-Year Warranty - 3HP Units



ETL Listed to UL
& CSA Standards

HP	CORD LENGTH	50 FT	100 FT	150 FT	200 FT	250 FT	300 FT	400 FT	500+ FT
208-240V, SINGLE PHASE PACKAGES									
2	PART NUMBER	8400JF050	8400JF100	8400JF150	8400JF200	8400JF250	8400JF300	8400JF400	8400JF500
	MSRP	\$6,293	\$6,865	\$7,004	\$7,193	\$7,415	\$8,444	\$12,452	Inquire
3	PART NUMBER	3.1JF050	3.1JF100	3.1JF150	3.1JF200	3.1JF250	3.1JF300	3.1JF400	3.1JF500
	MSRP	\$7,422	\$7,935	\$8,124	\$8,883	\$9,508	\$9,891	\$12,782	Inquire
208-240V, THREE PHASE PACKAGES									
2	PART NUMBER	2.3JF050	2.3JF100	2.3JF150	2.3JF200	2.3JF250	2.3JF300	2.3JF400	2.3JF500
	MSRP	\$10,767	\$11,062	\$11,426	\$11,745	\$12,491	\$13,083	\$13,849	Inquire
3	PART NUMBER	3.3JF050	3.3JF100	3.3JF150	3.3JF200	3.3JF250	3.3JF300	3.3JF400	3.3JF500
	MSRP	\$11,181	\$11,474	\$11,841	\$12,498	\$12,905	\$14,404	\$15,486	Inquire

*Packages include 5 twist-and-lock nozzles (Balsam, Linden, Birch, Spruce, and Redwood).

**2HP units operate in as little as 20 in. of water. 3HP units operate in as little as 24 in. of water.

***Extended warranty available on 2HP units.

Product Notes:

1. Prices in bold have quick disconnect installed on power cords.
2. 2 and 3HP, single phase units utilize stainless steel top and bottom screens, and composite motor top and legs.
3. 2 and 3HP, three phase units utilize stainless steel top and bottom screens, motor top, legs, and stub cord protective sleeving.
4. 2HP, single phase options include C-85 control panel. 3HP, single phase options include C-95 control panel.
5. 2 and 3HP, three phase units include CF-3235 control panel.
6. 460-480V, three phase options available for special order in approved locations only. Contact Kasco for details.



NEVER enter the water with
electrical equipment connected
and / or in operation.



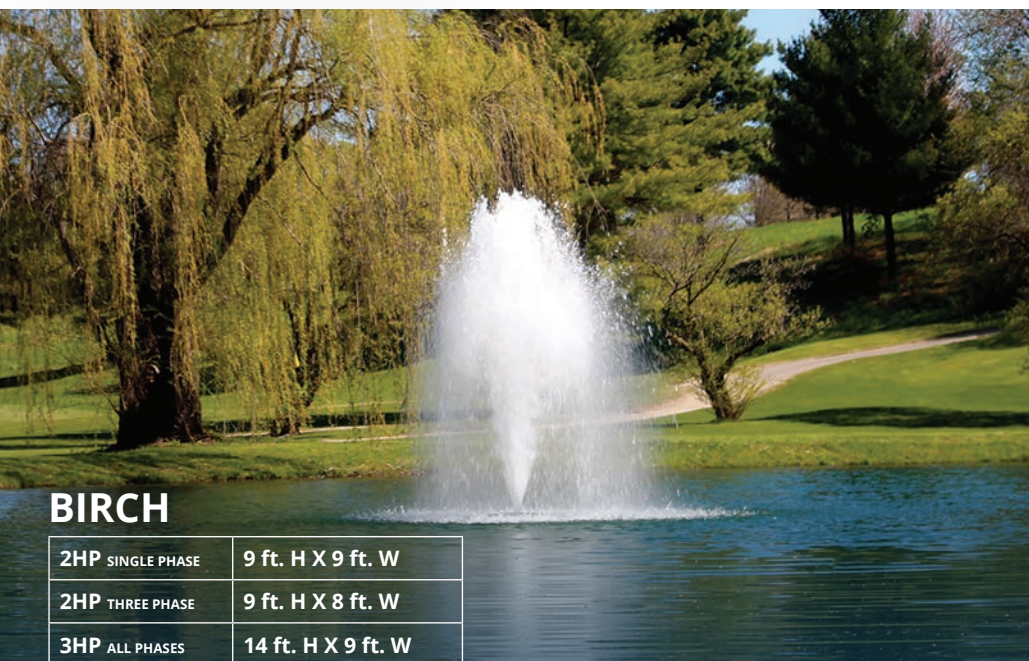
BALSAM

2HP ALL PHASES	14 ft. H X 32 ft. W
3HP ALL PHASES	19 ft. H X 34 ft. W



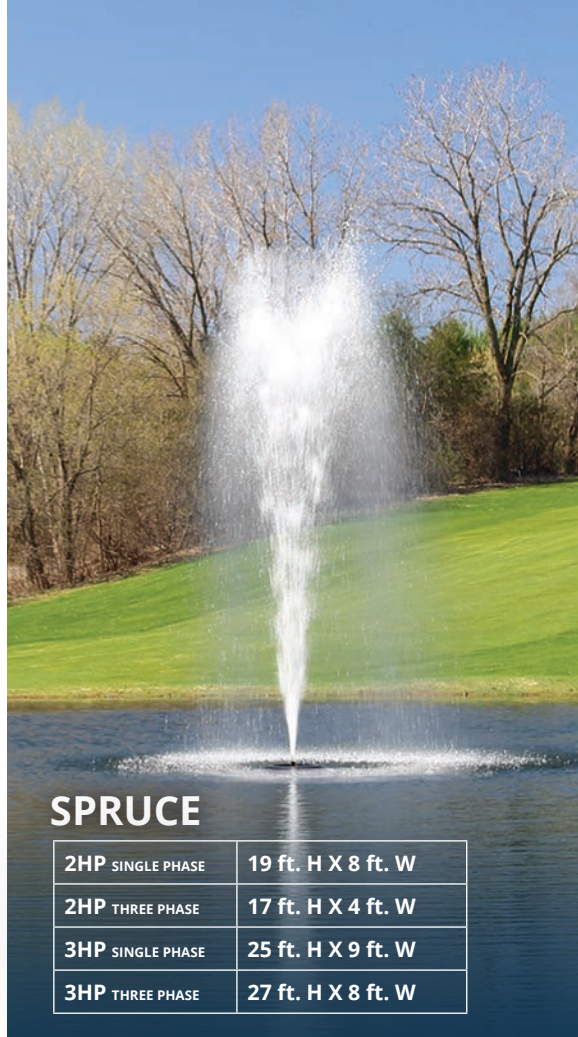
LINDEN

2HP SINGLE PHASE	18 ft. H X 32 ft. W
2HP THREE PHASE	14 ft. H X 30 ft. W
3HP ALL PHASES	20.5 ft. H X 38 ft. W



BIRCH

2HP SINGLE PHASE	9 ft. H X 9 ft. W
2HP THREE PHASE	9 ft. H X 8 ft. W
3HP ALL PHASES	14 ft. H X 9 ft. W



SPRUCE

2HP SINGLE PHASE	19 ft. H X 8 ft. W
2HP THREE PHASE	17 ft. H X 4 ft. W
3HP SINGLE PHASE	25 ft. H X 9 ft. W
3HP THREE PHASE	27 ft. H X 8 ft. W



REDWOOD

2HP ALL PHASES	22 ft. H X 6 ft. W
3HP ALL PHASES	20 ft. H X 4 ft. W

5HP & 7.5HP

J SERIES FOUNTAINS

- 208-240V, 5HP available as single and three phase options
- 208-240V, 7.5HP available as three phase only
- 1-piece float blends in with water's surface and is easy to install
- Stainless steel components provide increased performance and longevity
- Premium Nozzles available separately (see pages 16-17)
- Manage from shore with included human-rated, GFCI-protected control panel



5 Patterns Included*



Shallow Operating
Depths**



Lighting Packages
Available



5-Year Warranty



ETL Listed to UL
& CSA Standards

HP	CORD LENGTH	100 FT	150 FT	200 FT	250 FT	300 FT	400 FT	500+ FT
208-240V, SINGLE PHASE PACKAGES								
5	PART NUMBER	5.1JF100	5.1JF150	5.1JF200	5.1JF250	5.1JF300	5.1JF400	5.1JF500
	MSRP	\$9,285	\$10,372	\$11,180	\$12,694	\$15,161	\$16,402	Inquire
208-240V, THREE PHASE PACKAGES								
5	PART NUMBER	5.3JF100	5.3JF150	5.3JF200	5.3JF250	5.3JF300	5.3JF400	5.3JF500
	MSRP	\$11,948	\$12,699	\$13,574	\$14,052	\$17,406	\$18,698	Inquire
7.5	PART NUMBER	7.3JF100	7.3JF150	7.3JF200	7.3JF250	7.3JF300	7.3JF400	7.3JF500
	MSRP	\$12,254	\$13,272	\$13,922	\$16,047	\$17,252	\$20,251	Inquire

*Packages include 5 twist-and-lock nozzles (Balsam, Linden, Birch, Spruce, and Redwood).

**5HP units operate in as little as 26 in. of water. 7.5HP units operate in as little as 28 in. of water.

Product Notes:

1. Prices in bold have quick disconnect installed on power cords.
2. All 5 and 7.5HP units utilize stainless steel top and bottom screens, motor top, legs, and protective stub cord sleeving.
3. 5HP, single phase units include C-95 control panel. 5HP, three phase units include CF-3235 control panel.
4. 7.5HP, three phase units include CF-3075 control panel.
5. 460-480V, three phase options available for special order in approved locations only. Contact Kasco for details.



NEVER enter the water with
electrical equipment connected
and / or in operation.



BALSAM

5HP ALL PHASES	18 ft. H X 34 ft. W
7.5HP ALL PHASES	21 ft. H X 36 ft. W



LINDEN

5HP SINGLE PHASE	20 ft. H X 41 ft. W
5HP THREE PHASE	19 ft. H X 41 ft. W
7.5HP ALL PHASES	26 ft. H X 46 ft. W



BIRCH

5HP SINGLE PHASE	22 ft. H X 11 ft. W
5HP THREE PHASE	21 ft. H X 9 ft. W
7.5HP ALL PHASES	26 ft. H X 11 ft. W



SPRUCE

5HP SINGLE PHASE	29 ft. H X 10 ft. W
5HP THREE PHASE	32 ft. H X 10 ft. W
7.5HP ALL PHASES	34 ft. H X 12 ft. W



REDWOOD

5HP ALL PHASES	32 ft. H X 6 ft. W
7.5HP ALL PHASES	36 ft. H X 8 ft. W

PREMIUM NOZZLES

FOR J SERIES FOUNTAINS

Further define your J Series experience with a Premium Nozzle, available for all HP sizes. Purchased separately, Kasco Premium Nozzles generate crisp and distinct streams of water, delivering dramatic and captivating displays.



Fern



Available for All
J Series Fountains



4 Pattern Choices for
3/4 & 1HP Units



6 Pattern Choices for
2, 3, 5, & 7.5HP Units



Twist-and-lock
Installation



Purchased
Separately



Mighty Oak



Magnolia



Mahogany



Madrone



Palm

PATTERN	3/4 & 1HP PART NUMBERS & DIMENSIONS (H x W) (FT)				2, 3, 5, & 7.5HP PART NUMBERS & DIMENSIONS (H x W) (FT)					
	SINGLE PHASE									
	PART #	3/4HP	1HP	MSRP	PART #	2HP	3HP	5HP	7.5HP	MSRP
Mighty Oak	431335K	10 x 24	13 x 34	\$75	841335K	14.5 x 40	19.5 x 51	24.5 x 58	-	\$325
Magnolia	431325K	9 x 29	11.5 x 37	\$75	841325K	14 x 35	18 x 60	23.5 x 72	-	\$325
Mahogany	431345K	11.5 x 28	14 x 34	\$75	841345K	12 x 43	19 x 48	28 x 64	-	\$325
Madrone	431330K	11.5 x 28	14 x 35	\$75	841330K	15 x 43	20 x 59	24 x 70	-	\$325
Palm	-	-	-	-	841320K	12 x 26	16 x 36	20.5 x 40	-	\$325
Fern	-	-	-	-	841315K	12 x 36	16 x 54	23 x 68	-	\$325
THREE PHASE										
Mighty Oak	431335K	10 x 24	13 x 34	\$75	841335K	14.5 x 40	19.5 x 51	24.5 x 58	27 x 60	\$325
Magnolia	431325K	9 x 29	11.5 x 37	\$75	841325K	13.5 x 40	18 x 60	23.5 x 72	26 x 80	\$325
Mahogany	431345K	11.5 x 28	14 x 34	\$75	841345K	14.5 x 35.5	20 x 47	25 x 55	29 x 72	\$325
Madrone	431330K	11.5 x 28	14 x 35	\$75	841330K	15 x 43	20 x 51	25 x 57	26 x 75	\$325
Palm	-	-	-	-	841320K	12 x 26	16 x 36	20.5 x 40	22 x 42	\$325
Fern	-	-	-	-	841315K	12 x 36	19 x 53	23 x 59	24 x 66	\$325



MIGHTY OAK



MAGNOLIA



MAHOGANY



MADRONE



PALM



FERN *Best in Narrow Ponds*



*1HP VFX Series
Fountain*

VFX SERIES

The Best of Beauty and Aeration

Kasco VFX Series Fountains are the choice for an elegant display with superior aeration benefits. These high-flow units are efficient, easy to install and operate, and ideal for many applications.

Packages include motor unit, 1-piece float, bottom screen, mooring ropes, power cord, and control panel with human-rated, GFCI-protection.

Available in 1/2 - 5HP sizes and single and three phase options to fit virtually any application.

Complete packages are ETL Listed to UL and CSA standards for safety.





Classic
V-shaped Pattern



Combines
Beauty & Aeration



Snap-on
Lights Available



1-Piece Float
for Easy Assembly



1/2HP, 3/4HP, & 1HP

VFX SERIES FOUNTAINS

- 120V and 208-240V, single phase options
- 1-piece float blends in with water's surface and is easy to install
- Bottom screen helps prevent clogging
- Manage from shore with included human-rated, GFCI-protected control panel



Classic V-shaped
Pattern



Shallow Operating
Depths*



Lighting Packages
Available



2-Year Warranty



ETL Listed to UL
& CSA Standards

HP	DISPLAY		CORD LENGTH	50 FT	100 FT	150 FT	200 FT	250 FT	300 FT	400 FT	500+ FT
	H (FT)	W (FT)									
120V, SINGLE PHASE PACKAGES											
1/2	5	15	PART #	2400VFX050	2400VFX100	2400VFX150	2400VFX200	-	-	-	-
			MSRP	\$1,762	\$1,945	\$2,530	\$2,792	-	-	-	-
3/4	5.5	21	PART #	3400VFX050	3400VFX100	3400VFX150	3400VFX200	-	-	-	-
			MSRP	\$1,957	\$2,151	\$2,776	\$3,059	-	-	-	-
1	8	26	PART #	4400VFX050	4400VFX100	4400VFX150	4400VFX200	-	-	-	-
			MSRP	\$2,240	\$2,864	\$3,445	\$3,897	-	-	-	-
208-240V, SINGLE PHASE PACKAGES											
3/4	5.5	21	PART #	3400HVFX050	3400HVFX100	3400HVFX150	3400HVFX200	3400HVFX250	3400HVFX300	3400HVFX400	3400HVFX500
			MSRP	\$3,912	\$4,077	\$4,843	\$5,090	\$5,207	\$5,332	\$5,912	Inquire
1	8	26	PART #	4400HVFX050	4400HVFX100	4400HVFX150	4400HVFX200	4400HVFX250	4400HVFX300	4400HVFX400	4400HVFX500
			MSRP	\$4,196	\$4,345	\$5,128	\$5,380	\$5,637	\$5,768	\$6,322	Inquire

*1/2HP units operate in as little as 17.5 in. of water. 3/4HP units operate in as little as 17.5 in. of water. 1HP units operate in as little as 19 in. of water.

Product Notes:

1. Prices in bold have quick disconnect installed on power cords.
2. 1/2, 3/4, and 1HP units, 120V, single phase units include C-25 control panel.
3. 3/4 and 1HP units, 208-240V, single phase units include C-85 control panel.



NEVER enter the water with
electrical equipment connected
and / or in operation.

2HP & 5HP

VFX SERIES FOUNTAINS

- 208-240V, single and three phase options
- 1-piece float blends in with water's surface and is easy to install
- Top and bottom screens help prevent clogging
- Manage from shore with included human-rated, GFCI-protected control panel



Classic V-shaped
Pattern



Shallow Operating
Depths*



Lighting Packages
Available



3-Year Warranty**



ETL Listed to UL
& CSA Standards

HP	DISPLAY		CORD LENGTH	50 FT	100 FT	150 FT	200 FT	250 FT	300 FT	400 FT	500+ FT
	H (FT)	W (FT)									
208-240V, SINGLE PHASE PACKAGES											
2	8	32	PART #	8400VFX050	8400VFX100	8400VFX150	8400VFX200	8400VFX250	8400VFX300	8400VFX400	8400VFX500
			MSRP	\$6,633	\$7,216	\$7,404	\$7,602	\$7,840	\$8,859	\$12,730	Inquire
5	9	34	PART #	-	5.1VFX100	5.1VFX150	5.1VFX200	5.1VFX250	5.1VFX300	5.1VFX400	5.1VFX500
			MSRP	-	\$9,361	\$10,321	\$11,062	\$12,374	\$14,576	\$16,718	Inquire
208-240V, THREE PHASE PACKAGES											
2	8	32	PART #	2.3VFX050	2.3VFX100	2.3VFX150	2.3VFX200	2.3VFX250	2.3VFX300	2.3VFX400	2.3VFX500
			MSRP	\$10,502	\$10,730	\$11,160	\$11,384	\$12,105	\$12,700	\$13,777	Inquire
5	9	34	PART #	-	5.3VFX100	5.3VFX150	5.3VFX200	5.3VFX250	5.3VFX300	5.3VFX400	5.3VFX500
			MSRP	-	\$11,731	\$12,477	\$13,741	\$14,339	\$17,641	\$19,034	Inquire

*2HP units operate in as little as 20 in. of water. 5HP units operate in as little as 26 in. of water.

**Extended warranty available on 2HP and 5HP units.

Product Notes:

1. Prices in bold have quick disconnect installed on power cords.
2. 2HP, single phase units include C-85 control panel. 5HP, single phase units include C-95 control panel.
3. 2 and 5HP, three phase units include CF-3235 control panel.
4. Three phase units are constructed with a durable stainless steel motor top for reliable performance in all environments.
5. Mesh screen (included) around bottom screen further helps prevent clogging.
6. 460-480V, three phase option available for special order in approved locations only. Contact Kasco for details.



NEVER enter the water with
electrical equipment connected
and / or in operation.



WATERGLOW LIGHTING

Add Beauty to Your Evening Displays

Kasco WaterGlow Lighting dramatically illuminates your fountain or surface aerator pattern during the evening hours. Available in composite or stainless steel housings and with several color options, these versatile LED lights are a perfect addition to your display.

All lighting fixtures feature a durable, high-strength housing for watertight operation.

Easy-to-install, snap-on light clips included with RGB LED, Composite LED, and Stainless Steel LED systems.

Multiple sizes and styles available to fit fountains and surface aerators.



*2HP J Series Fountain with
Palm Premium Nozzle &
RGBW40 LED Light Kit*

LIGHTING SELECTION GUIDE

Below are lighting system recommendations for fountains and surface aerators based on unit size (HP). Background light, pattern, and fixture angle can affect visual experience. Using these recommendations will help ensure your pattern is illuminated to the fullest extent possible.



LIGHTING SYSTEM			RECOMMENDED UNIT SIZE (HP)												
LIGHT SYSTEM	MODEL	NUMBER OF FIXTURES	FOUNTAINS							SURFACE AERATORS					
			1/2	3/4	1	2	3	5	7.5	1/2	3/4	1	2	3	5
RGBW40	RGBW2SW40 RGBW2LW40	2				✓									
RGBW40	RGBW3SW40 RGBW3LW40	3				✓	✓	✓	✓				✓*	✓	✓
RGBW40	RGBW4SW40 RGBW4LW40	4						✓	✓						
Stainless Steel LED	LED3S19	3				✓	✓	✓		✓	✓		✓*	✓	
Stainless Steel LED	LED6S19	6					✓	✓	✓					✓	
RGB LED	RGB3C5	3	✓	✓	✓					✓	✓	✓			
RGB LED	RGB6C5	6				✓	✓						✓	✓	✓
Composite LED	LED3C11	3	✓	✓	✓					✓	✓	✓			
Composite LED	LED6C11	6				✓	✓	✓					✓	✓	✓

*If adding an LED3S19, RGBW3SW40, or RGBW3SL40 3-light kit to a 2HP surface aerator, the 3 and 5HP surface aerator float must be used. Contact Kasco for assistance.

Product Notes:

1. If adding a Composite LED, Stainless Steel LED, or RGB LED light kit to a 2, 3, or 5HP surface aerator, an adapter is needed to accommodate the 3-piece float.
2. If ordering a 3-light kit, a 3-light kit adapter is needed. If ordering a 6-light kit, a 6-light kit adapter is needed. See page 63 for part numbers and pricing.

RGB LED

WATERGLOW LIGHTING

- Packages include light fixtures, brackets, snap-on clips, power cord, waterproof disconnect caps, remote control, and RGB control panel
- 3- and 6-fixture kits available in multiple power cord lengths
- Runs on 24Vdc power



9 Vibrant
Color Choices



Durable Composite Housings
for Watertight Operation



Power Cord Lengths
up to 400 ft.



5 Watts Per Fixture



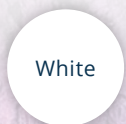
2-Year Warranty

CORD LENGTH	50 FT	100 FT	150 FT	200 FT	250 FT	300 FT	400 FT
3-FIXTURE KITS							
PART NUMBER	RGB3C5-050	RGB3C5-100	RGB3C5-150	RGB3C5-200	RGB3C5-250	RGB3C5-300	RGB3C5-400
MSRP	\$1,535	\$1,753	\$1,971	\$2,185	\$2,418	\$3,120	\$4,048
6-FIXTURE KITS							
PART NUMBER	RGB6C5-050	RGB6C5-100	RGB6C5-150	RGB6C5-200	RGB6C5-250	RGB6C5-300	RGB6C5-400
MSRP	\$2,633	\$3,090	\$3,548	\$4,007	\$4,481	\$5,997	\$7,509

*When adding a composite light kit to a 2 or 3HP surface aerator, be sure to also order a 3-light kit adapter or 6-light kit adapter. See page 63.

Product Notes:

1. See Lighting Selection Guide on page 23 for lighting recommendations per HP.
2. Waterproof disconnect caps allow customers to leave the main power cord in the water when fixtures are pulled for maintenance or storage.
3. Main power cord does not have its own quick disconnect.
4. Protective cord sleeving included on each fixture. 3 ft. of sleeving included on main power cord(s).
5. 6-fixture kits ship with 2 power cords, each with 3 fixtures.
6. Universal Lighting available for non-Kasco units. Contact Kasco for details.



White



Warm
White



Green



Magenta



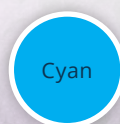
Yellow



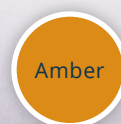
Red



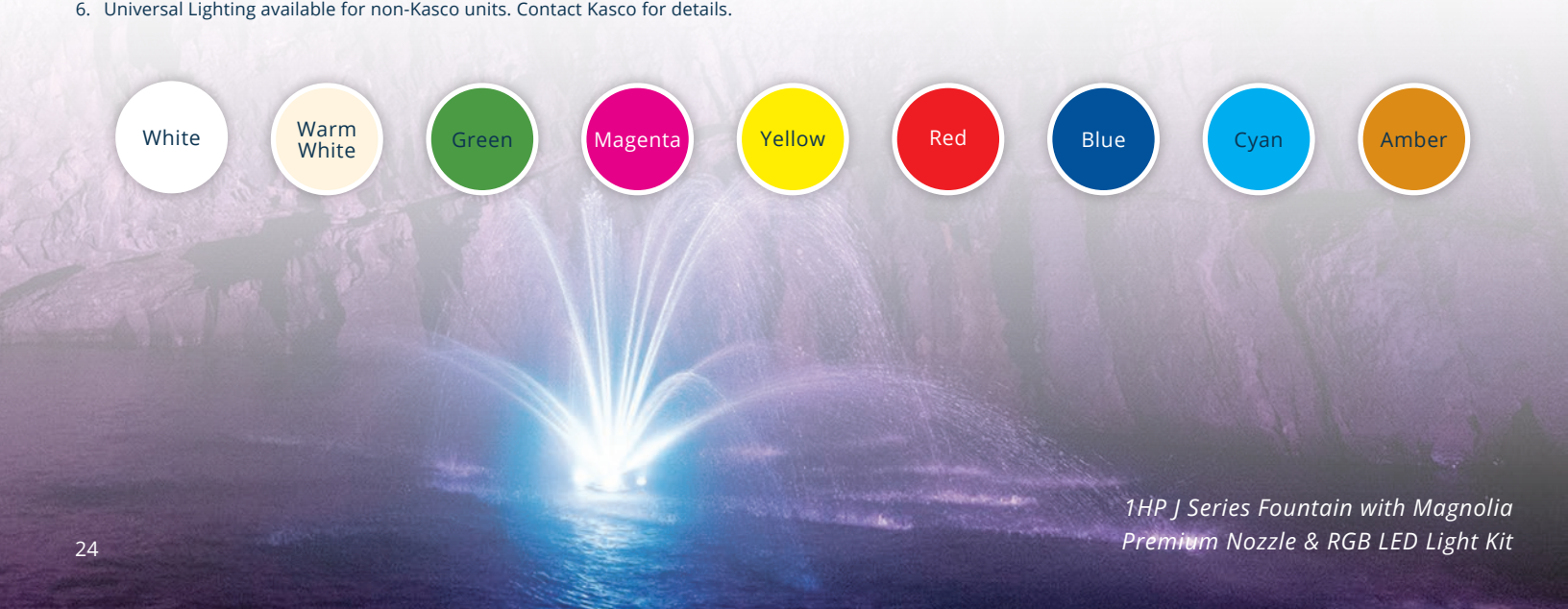
Blue



Cyan



Amber



1HP J Series Fountain with Magnolia
Premium Nozzle & RGB LED Light Kit



Snap-on Clips
for Easy Installation



Vibrant Color
from All Angles



Great for
Fountains or
Surface Aerators



Set to Music
in Rhythmic
Patterns



COMPOSITE LED

WATERGLOW LIGHTING

- Includes light fixtures, brackets, snap-on clips, power cord, waterproof disconnect caps, colored lenses, and lens caps
- 3- and 6-fixture kits available in multiple power cord lengths
- Runs on 120Vac power



Displays White and Includes Red, Green, Blue, and Amber Lenses



Durable Composite Fixtures for Watertight Operation



Power Cord Lengths up to 500 ft.



11 Watts and 910 Lumens Per Fixture



2-Year Warranty

CORD LENGTH	50 FT	100 FT	150 FT	200 FT	250 FT	300 FT	400 FT	500 FT
3-FIXTURE KITS								
PART NUMBER	LED3C11-050	LED3C11-100	LED3C11-150	LED3C11-200	LED3C11-250	LED3C11-300	LED3C11-400	LED3C11-500
MSRP	\$922	\$1,016	\$1,103	\$1,200	\$1,327	\$1,412	\$1,552	\$2,130
6-FIXTURE KITS								
PART NUMBER	LED6C11-050	LED6C11-100	LED6C11-150	LED6C11-200	LED6C11-250	LED6C11-300	LED6C11-400	LED6C11-500
MSRP	\$1,747	\$1,827	\$1,918	\$2,014	\$2,113	\$2,222	\$2,385	\$2,717

- Product Notes:
1. See Lighting Selection Guide on page 23 for lighting recommendations per HP.
 2. Waterproof disconnect caps allow customers to leave the main power cord in the water when fixtures are pulled for maintenance or storage.
 3. Main power cord does not have its own quick disconnect.
 4. Protective cord sleeving included on each fixture. 3 ft. of sleeving included on main power cord(s).
 5. Universal Lighting available for non-Kasco units. Contact Kasco for details.



2HP J Series Fountain with Mighty Oak Premium Nozzle & Composite LED Light Kit



Snap-on Clips
for Easy Installation



Vibrant Color
from All Angles



Great for
Fountains or
Surface Aerators



Power Cord
Lengths up to
500 ft.



STAINLESS STEEL LED

WATERGLOW LIGHTING

- Includes light fixtures, brackets, snap-on clips, power cord with quick disconnect, colored lenses, and lens caps
- 3- and 6-fixture kits available in multiple power cord lengths
- Runs on 120Vac power



Displays White and Includes Red, Green, Blue, and Amber Lenses



Durable Stainless Steel Fixtures for Watertight Operation



19 Watts and 1,700 Lumens Per Fixture



3-Year Warranty



UL / CSA Listed

CORD LENGTH	50 FT	100 FT	150 FT	200 FT	250 FT	300 FT	400 FT	500 FT
3-FIXTURE KITS								
PART NUMBER	LED3S19-050	LED3S19-100	LED3S19-150	LED3S19-200	LED3S19-250	LED3S19-300	LED3S19-400	LED3S19-500
MSRP	\$2,228	\$2,316	\$2,412	\$2,508	\$2,596	\$2,713	\$2,924	\$3,240
6-FIXTURE KITS								
PART NUMBER	LED6S19-050	LED6S19-100	LED6S19-150	LED6S19-200	LED6S19-250	LED6S19-300	LED6S19-400	LED6S19-500
MSRP	\$4,038	\$4,142	\$4,248	\$4,355	\$4,474	\$4,596	\$4,789	\$4,885

- Product Notes:
1. See Lighting Selection Guide on page 23 for lighting recommendations per HP.
 2. Fixtures are daisy-chained together for easy installation.
 3. Quick disconnect is included on main power cord.
 4. Protective cord sleeving included on each fixture. 3 ft. of sleeving included on main power cord(s).
 5. Universal Lighting available for non-Kasco units. Contact Kasco for details.



2HP J Series Fountain with Balsam Nozzle & Stainless Steel LED Light Kit



Snap-on Clips
for Easy Installation



Vibrant Color
from All Angles



Great for
Fountains or
Surface Aerators



Power Cord
Lengths up to
500 ft.



RGBW40

DELUXE DMX LIGHTING SYSTEM

- Includes fixtures, brackets, power cord with quick disconnect, and control panel
- 2-, 3-, and 4-fixture kits available in multiple power cord lengths
- Runs on 120Vac power



36 pre-programmed colors
& DMX controllable



Durable Stainless Steel Fixtures
for Watertight Operation



40 Watts and 2,376
Lumens Per Fixture



5-Year Warranty



UL / CSA Listed

WI-FI ENABLED PACKAGES

Use the touchpad inside the panel or download the app* on your mobile device to control color, sequencing patterns, and power.

PUSH-BUTTON PACKAGES

Use the push-button controller inside the panel or included short-range remote to cycle through color, sequencing patterns, and power.

CONTROL OPTION	MODEL	CORD LENGTH						
		100 FT	150 FT	200 FT	250 FT	300 FT	400 FT	500 FT
2-FIXTURE KITS								
Wi-Fi	RGBW2SW40	\$6,479	\$6,706	\$6,900	\$7,116	\$7,344	\$7,764	\$8,196
Push-Button	RGBW2SL40							
3-FIXTURE KITS								
Wi-Fi	RGBW3SW40	\$7,865	\$8,093	\$8,287	\$8,503	\$8,719	\$9,151	\$9,583
Push-Button	RGBW3SL40							
4-FIXTURE KITS								
Wi-Fi	RGBW4SW40	\$9,353	\$9,580	\$9,775	\$9,991	\$10,207	\$11,575	\$12,243
Push-Button	RGBW4SL40							

*See manual for information on the app needed for the Wi-Fi enabled packages.

Product Notes:

1. See Lighting Selection Guide on page 23 for lighting recommendations per HP.
2. Part number is the model combined with cord length (ex. RGBW2SW40-100).
3. Fixtures are daisy-chained together for easy installation.
4. Quick disconnect is included on main power cord.
5. Protective cord sleeving included on each fixture. 3 ft. of sleeving included on main power cord(s).
6. Wi-Fi models feature long-range operation.

3HP J Series Fountain with Linden
Nozzle & RGBW40 LED Light Kit



Stainless Steel
Components for
Durability



36 Pre-
programmed Colors
& DMX Controllable



Great for
Fountains or
Surface Aerators



Plug and Play
Operation



Independently operated, DMX-controllable lighting fixtures



*3HP J Series Fountain with Birch
Nozzle & RGBW40 LED Light Kit*



3/4HP AquatiClear™ Circulator

AQUATICLEAR™

Clog-Resistant Waterfront Management

AquatiClear™ by Kasco is a clog-resistant circulator that keeps water near docks, canals, and shorelines free of floating debris and foul odors. Utilizing patented Clean Current Technology™, AquatiClear features a prop guard with smooth, rounded tines that allow debris to slip by instead of collect around the unit, meaning continuous operation and less maintenance.

All packages include motor unit and power cord. Some packages include a mounting option. Control panels available separately.

Crown-like prop guard with smooth, rounded tines decreases clogging from floating algae and debris.

Versatile mounting options allow AquatiClear to direct the flow of water to address specific areas.





BEFORE

Clears Shorelines
of Floating Debris



Debris Slips by
Instead of Clogging



AFTER

Less Clogging
Reduces
Maintenance



Clean Current
Technology™



AQUATICLEAR™

CLOG-RESISTANT CIRCULATOR

- 120V and 208-240V, single phase options
- Purchased as stand-alone unit, or as part of a Horizontal Float or Universal Mount package
- Universal Mounts include the Simple Swivel bracket
- Shallow Water Install Kit available
- Manage from shore with optional human-rated, GFCI-protected control panel (see page 62)



1/2, 3/4, & 1HP
Available



Crown-like Prop Guard
Decreases Clogging



2-Year Warranty



ETL Listed to UL
& CSA Standards

HP	VOLT (V)	MODEL	CORD LENGTH									
			25 FT	50 FT	75 FT	100 FT	150 FT	200 FT	250 FT	300 FT	400 FT	500+ FT
UNIT ONLY PACKAGES - "C" (NO MOUNT)												
1/2	120	2400C	\$1,156	\$1,194	-	\$1,392	\$1,880	\$2,060	-	-	-	-
3/4	120	3400C	\$1,275	\$1,318	-	\$1,509	\$2,015	\$2,185	-	-	-	-
3/4	208-240	3400HC	-	\$1,317	-	\$1,508	\$2,079	\$2,282	\$2,482	\$2,587	\$3,104	Inquire
1	120	4400C	-	\$1,501	\$1,623	\$2,022	\$2,631	\$3,024	-	-	-	-
1	208-240	4400HC	-	\$1,549	-	\$1,734	\$2,239	\$2,461	\$2,837	\$2,954	\$3,258	Inquire
UNIT AND HORIZONTAL FLOAT PACKAGES - "CFM"												
1/2	120	2400CFM	\$1,691	\$1,729	-	\$1,927	\$2,415	\$2,595	-	-	-	-
3/4	120	3400CFM	\$1,810	\$1,853	-	\$2,044	\$2,550	\$2,720	-	-	-	-
3/4	208-240	3400HCFM	-	\$1,852	-	\$2,043	\$2,614	\$2,817	\$3,017	\$3,122	\$3,639	Inquire
1	120	4400CFM	-	\$2,036	\$2,158	\$2,557	\$3,166	\$3,559	-	-	-	-
1	208-240	4400HCFM	-	\$2,084	-	\$2,269	\$2,774	\$2,996	\$3,372	\$3,489	\$3,793	Inquire
UNIT AND UNIVERSAL MOUNT PACKAGES - "CDM" (CUSTOMER MUST SUPPLY PIPE)												
1/2	120	2400CDM	\$1,621	\$1,659	-	\$1,857	\$2,345	\$2,525	-	-	-	-
3/4	120	3400CDM	\$1,740	\$1,783	-	\$1,974	\$2,480	\$2,650	-	-	-	-
3/4	208-240	3400HCDM	-	\$1,782	-	\$1,973	\$2,544	\$2,747	\$2,947	\$3,052	\$3,569	Inquire
1	120	4400CDM	-	\$1,966	\$2,088	\$2,487	\$3,096	\$3,489	-	-	-	-
1	208-240	4400HCDM	-	\$2,014	-	\$2,199	\$2,704	\$2,926	\$3,302	\$3,419	\$3,723	Inquire

Product Notes:

1. Prices in bold have quick disconnect installed on power cords.
2. Part number is the model combined with cord length (ex. 3400CDM150).
3. If AquatiClear is installed less than 1.5 ft. below the surface, a Shallow Water Install Kit is recommended. See page 35.

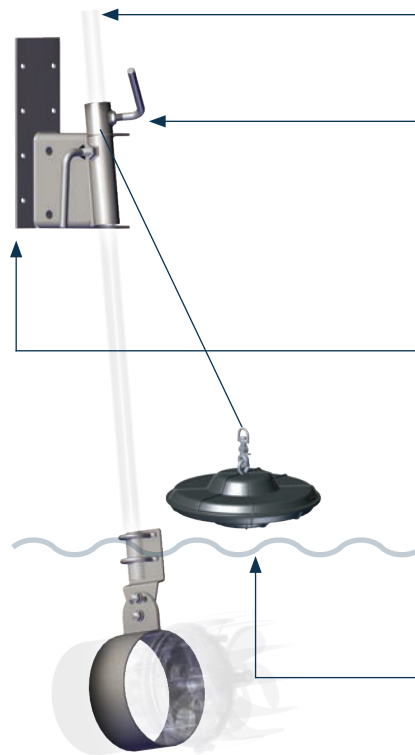


NEVER enter the water with
electrical equipment connected
and / or in operation.

AQUATICLEAR MOUNTING OPTIONS

UNIVERSAL MOUNT (INCLUDED WITH "CDM" MODELS)

Mount AquatiClear to a dock or similar structure and easily adjust its angle and depth. Adjust rotation with the patented Simple Swivel bracket. Mount includes a lifetime warranty.



CUSTOMER-SUPPLIED PIPE

1 in. / 25 DN threaded or unthreaded pipe purchased separately.

SIMPLE SWIVEL BRACKET

Rotate AquatiClear to direct flow of water in desired direction. Included with Universal Mount.

U-BOLT KIT

Optional U-bolt Kit (PN 997108K) attaches base plate to dock piling without drilling into structure. See page 63.

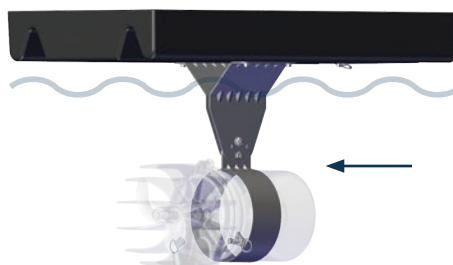


SHALLOW WATER INSTALL KIT

Optional Shallow Water Install Kit (PN 243609) allows for installation in shallow applications without loud whirlpool noise at the surface. See page 63.

HORIZONTAL FLOAT (INCLUDED WITH "CFM" MODELS)

Secure AquatiClear on the surface with three ropes and tie-down loops. Three angles of orientation moves water in desired direction. Float includes a 3-year warranty.



EASILY SECURE & ADJUST

Secure AquatiClear at the surface with high-strength tie-down loops and several adjustment options.



Pair Kasco AquatiClear Circulators with Pond Probiotics for maximized results. See page 58 for details.



1/2HP De-icer

DE-ICERS

Over 50 Years of Dock Defense

By pushing warmer water up, Kasco De-icers create an opening at the water's surface, keeping boats and docks safe from damaging ice buildup. De-icers also keep fish and aquatic species healthy throughout the winter by allowing oxygen to enter the open water areas. Whether in a pond, lake, or marina, Kasco De-icers provide a hassle-free solution for maintaining clear, open water.



Packages include de-icing unit, power cord, and 2 mooring ropes. Mounting options and control panels available.

Creates more thrust than any other de-icing product. More thrust means more open water to protect your property.

Optional dock mount kits allow for easy angle and depth adjustments allowing De-icers to fit countless applications.



Creates More
Open Water for the
Best Ice Protection



Lightweight and
Easy to Install



Stainless Steel
Components for
Durability



Provides a
Healthy Aquatic
Environment



DE-ICERS

PROTECT YOUR PROPERTY FROM ICE DAMAGE

- 120V and 208-240V, single phase options
- Install with included mooring ropes or optional mount kit
- Manage from shore with optional human-rated, GFCI-protected control panel (see page 62)



1/2, 3/4, & 1HP
Available



Prevents Ice Buildup and Improves
Aquatic Environment



3-Year Warranty



ETL Listed to UL
& CSA Standards

2026 RETAIL PRICING (2026 PRICING GOES INTO EFFECT MARCH 4)

HP	VOLT (V)	MODEL	CORD LENGTH									
			25 FT	50 FT	75 FT	100 FT	150 FT	200 FT	250 FT	300 FT	400 FT	500+ FT
120V, SINGLE PHASE PACKAGES												
1/2	120	2400D	\$1,016	\$1,054	-	\$1,252	\$1,740	\$1,920	-	-	-	-
3/4	120	3400D	\$1,110	\$1,153	-	\$1,344	\$1,850	\$2,020	-	-	-	-
1	120	4400D	\$1,223	\$1,261	\$1,383	\$1,782	\$2,391	\$2,784	-	-	-	-
208-240V, SINGLE PHASE PACKAGES												
3/4	208-240	3400HD	-	\$1,152	-	\$1,343	\$1,914	\$2,117	Inquire	Inquire	Inquire	Inquire
1	208-240	4400HD	-	\$1,309	-	\$1,494	\$1,999	\$2,221	Inquire	Inquire	Inquire	Inquire

Product Notes:

1. Prices in bold have quick disconnect installed on power cords.
2. Part number is the model combined with cord length (ex. 3400HD150).
3. De-icers should be placed 4-6 ft. below the surface, and 1 ft. off the bottom.
4. Mounting option and control panel sold separately.
5. All Kasco De-icers ship completely assembled. No hardware is needed unless using an optional Universal Mounting Kit.



De-icers create areas of open water which could be dangerous to people or animals nearby. Consider posting a warning sign near the area.

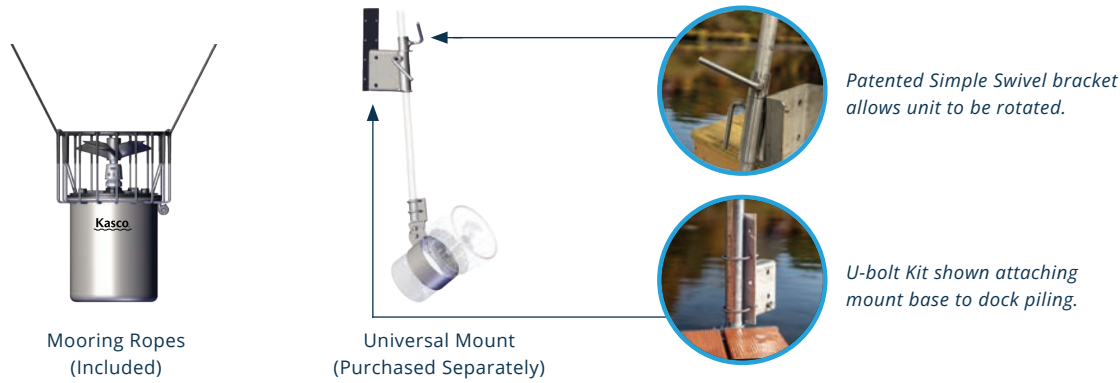


NEVER enter the water with electrical equipment connected and / or in operation.

DE-ICER ACCESSORIES

MOUNTING OPTIONS

Secure your Kasco De-icer to a dock or similar structure using the included ropes or optional mount kit. Choose depth, angle, and flow of water to achieve desired results. Use an optional U-bolt Kit with the Universal and Industrial Mount to attach the base plate to dock piling without drilling into structure. See page 63.



PART NUMBER	DESCRIPTION	MSRP
243485	Universal Mount (Customer supplies 1 in. / 25 DN nominal threaded or unthreaded pipe and (8) 5/16 in. lag screws to mount base plate to dock. To install mount without drilling into dock, use available U-bolt Kit instead of lag screws.)	\$425
243478	Universal Mount with Patented Simple Swivel Bracket (Includes all mount assembly hardware.)	\$465
243484	Industrial Mount (Customer supplies 1.5 in / 40 DN nominal threaded or unthreaded pipe and (8) 5/16 in lag screws to mount base plate to dock. To install mount without drilling into dock, use available U-bolt Kit (2) instead of lag screws.)	\$690
243479	Industrial Mount with Patented Simple Swivel Bracket (Includes all mount assembly hardware.)	\$739
997108K	U-bolt Kit for drill-free installation (Each kit includes 2 U-bolts and associated hardware.)	\$18

Product Notes:

- 1. Industrial Mounts are suggested for units in harsh environments.

CONTROL PANELS

Allow energy-saving automatic control of your Kasco De-icer. Select your desired temperature and/or time settings, and the control panel will do the rest.



C-10 Thermostat-Only
Control Panel



C-20 Timer & Thermostat
Control Panel

PART NUMBER	MODEL	DESCRIPTION	MSRP
110225	C-10	C-10 Thermostat-Only Control Panel (for 120V Units)	\$150
120350	C-20	C-20 Timer & Thermostat Control Panel (for 120V Units)	\$335



1HP Surface Aerator

SURFACE AERATORS

High Oxygen Transfer at Extreme Value


Kasco Surface Aerators push high volumes of water into the air. This process increases the overall health of your water and keeps it thoroughly mixed. Introducing oxygen and water movement breaks up stratification, eliminates odor, discourages algae growth, and promotes a healthy aquatic environment.



Packages include motor unit, float, mooring ropes, and power cord. Control panels available.

Available in 1/2 - 5HP sizes and single or three phase options to fit a variety of applications.

Packages that include control panels are ETL Listed to UL and CSA standards.



Great for
Backyard Ponds,
Fish Farms, and More



For Continuous or
Supplemental Use



Pair with
WaterGlow
Lighting Kit



Ideal in Depths
Less than 8 ft.



1/2HP, 3/4HP, & 1HP

SURFACE AERATOR

- 120V and 208-240V, single phase options
- 1-piece float blends in with water's surface and is easy to install
- Manage from shore with optional human-rated, GFCI-protected control panel (see page 62)



Lighting Packages
Available



Shallow Operating
Depths*



2-Year Warranty



ETL Listed to UL
& CSA Standards

HP	MODEL	CORD LENGTH									
		25 FT	50 FT	75 FT	100 FT	150 FT	200 FT	250 FT	300 FT	400 FT	500+ FT
120V, SINGLE PHASE PACKAGES											
1/2	2400AF	-	\$1,323	-	\$1,508	\$2,112	\$2,363	-	-	-	-
	2400AF (BTM SCR)	-	\$1,583	-	\$1,768	\$2,372	\$2,623	-	-	-	-
	2400A	\$1,056	\$1,094	-	\$1,292	\$1,780	\$1,960	-	-	-	-
3/4	3400AF	-	\$1,446	-	\$1,621	\$2,285	\$2,508	-	-	-	-
	3400AF (BTM SCR)	-	\$1,706	-	\$1,881	\$2,545	\$2,768	-	-	-	-
	3400A	\$1,150	\$1,193	-	\$1,384	\$1,890	\$2,060	-	-	-	-
1	4400AF	-	\$1,702	\$1,814	\$2,284	\$2,921	\$3,350	-	-	-	-
	4400AF (BTM SCR)	-	\$1,962	\$2,074	\$2,544	\$3,181	\$3,610	-	-	-	-
	4400A	\$1,263	\$1,301	\$1,423	\$1,822	\$2,431	\$2,824	-	-	-	-
208-240V, SINGLE PHASE PACKAGES											
3/4	3400HAF	-	\$1,513	-	\$1,658	\$2,251	\$2,451	\$2,666	\$2,818	\$3,329	Inquire
	3400HAF (BTM SCR)	-	\$1,773	-	\$1,918	\$2,511	\$2,711	\$2,926	\$3,078	\$3,589	Inquire
	3400HA	-	\$1,192	-	\$1,383	\$1,954	\$2,157	\$2,482	\$2,594	\$3,138	Inquire
1	4400HAF	-	\$1,726	-	\$1,856	\$2,526	\$2,767	\$2,982	\$3,089	\$3,237	Inquire
	4400HAF (BTM SCR)	-	\$1,986	-	\$2,116	\$2,786	\$3,027	\$3,242	\$3,349	\$3,497	Inquire
	4400HA	-	\$1,349	-	\$1,534	\$2,039	\$2,261	\$2,780	\$2,899	\$3,210	Inquire

*1/2HP units operate in as little as 17.5 in. of water. 3/4HP units operate in as little as 17.5 in. of water. 1HP units operate in as little as 19 in. of water.

Product Notes:

1. Prices in bold have quick disconnect installed on power cords.
2. Part number is the model combined with cord length (ex. 2400AF050).
3. "AF" models include unit and float; "BTM SCR" models include unit, float, and bottom screen.
4. "A" models include the motor unit only and do not include a float or bottom screen.
5. The correct control panel will depend on the voltage of the unit and if lights are being used. See page 62.



NEVER enter the water with
electrical equipment connected
and / or in operation.



Kasco Surface Aerators deliver up to 3.0 lbs. of O₂ per horsepower, per hour of operation, making them the most dependable and efficient units on the market.

2HP, 3HP, & 5HP

SURFACE AERATOR

- 208-240V, single and three phase options
- Control panels are optional except for three phase non-"U" models (see page 45)
- Control panels feature human-rated GFCI-protection (see page 62)



Lighting Packages
Available



Shallow Operating
Depths*



3-Year Warranty**



ETL Listed to UL
& CSA Standards

FLOAT AND BOTTOM SCREEN MODELS (CONTROL PANEL OPTIONAL)

HP	MODEL	CORD LENGTH							
		50 FT	100 FT	150 FT	200 FT	250 FT	300 FT	400 FT	500+ FT
208-240V, SINGLE PHASE PACKAGES (CONTROL PANEL OPTIONAL)									
2	8400AF	\$3,683	\$4,279	\$4,494	\$4,707	\$4,920	\$6,006	\$9,348	Inquire
	8400AF (BTM SCR)	\$3,943	\$4,539	\$4,754	\$4,967	\$5,180	\$6,266	\$9,608	Inquire
3	3.1AF	\$4,601	\$5,103	\$5,279	\$6,112	\$6,257	\$6,224	\$9,611	Inquire
	3.1AF (BTM SCR)	\$4,861	\$5,363	\$5,539	\$6,372	\$6,517	\$6,484	\$9,871	Inquire
5	5.1AF	-	\$6,562	\$7,526	\$8,261	\$9,650	\$11,049	\$12,920	Inquire
	5.1AF (BTM SCR)	-	\$6,822	\$7,786	\$8,521	\$9,910	\$11,309	\$13,180	Inquire
208-240V, THREE PHASE PACKAGES (CONTROL PANEL OPTIONAL)									
2	U2.3AF	\$5,442	\$5,691	\$6,193	\$6,483	\$7,236	\$7,743	\$9,203	Inquire
	U2.3AF (BTM SCR)	\$5,702	\$5,951	\$6,453	\$6,743	\$7,496	\$8,003	\$9,463	Inquire
3	U3.3AF	\$6,140	\$6,401	\$6,904	\$7,533	\$7,685	\$9,468	\$10,035	Inquire
	U3.3AF (BTM SCR)	\$6,400	\$6,661	\$7,164	\$7,793	\$7,945	\$9,728	\$10,295	Inquire
5	U5.3AF	-	\$6,652	\$7,399	\$8,266	\$9,106	\$12,377	\$13,668	Inquire
	U5.3AF (BTM SCR)	-	\$6,912	\$7,659	\$8,526	\$9,366	\$12,637	\$13,928	Inquire

*2HP units operate in as little as 20 in. of water. 3HP units operate in as little as 24 in. of water. 5HP units operate in as little as 26 in. of water.

**Extended warranty available on 2HP, 3HP, and 5HP units.

Product Notes:

1. Prices in bold have quick disconnect installed on power cords.
2. Part number is the model combined with cord length (ex. U2.3AF050).
3. "AF" models include unit and float; "BTM SCR" models include unit, float, and bottom screen.
4. 460 - 480V, three phase option available for special order in approved locations only. Contact Kasco for details.
5. The correct control panel will depend on the voltage of the unit and if lights are being used. See page 62.



NEVER enter the water with
electrical equipment connected
and / or in operation.

FLOAT AND BOTTOM SCREEN MODELS (CA-3235 CONTROL PANEL INCLUDED)

HP	MODEL	CORD LENGTH							
		50 FT	100 FT	150 FT	200 FT	250 FT	300 FT	400 FT	500+ FT
208-240V, THREE PHASE PACKAGES (INCLUDES CA-3235 CONTROL PANELS)									
2	2.3AF	\$8,884	\$9,121	\$9,594	\$9,867	\$10,581	\$11,063	\$12,725	Inquire
	2.3AF (BTM SCR)	\$9,144	\$9,381	\$9,854	\$10,127	\$10,841	\$11,323	\$12,985	Inquire
3	3.3AF	\$9,453	\$9,699	\$10,175	\$10,708	\$10,916	\$12,601	\$13,470	Inquire
	3.3AF (BTM SCR)	\$9,713	\$9,959	\$10,435	\$10,968	\$11,176	\$12,861	\$13,730	Inquire
5	5.3AF	-	\$10,249	\$10,994	\$11,863	\$12,704	\$15,859	\$17,267	Inquire
	5.3AF (BTM SCR)	-	\$10,509	\$11,254	\$12,123	\$12,964	\$16,119	\$17,527	Inquire

- Product Notes:
- 1. Prices in bold have quick disconnect installed on power cords.
 - 2. Part number is the model combined with cord length (ex. 2.3AF050).
 - 3. "AF" models include unit and float; "BTM SCR" models include unit, float, and bottom screen.
 - 4. 460 - 480V, three phase option available for special order in approved locations only. Contact Kasco for details.

UNIT-ONLY (A) MODELS (CONTROL PANEL OPTIONAL)

HP	MODEL	CORD LENGTH									
		25 FT	50 FT	75 FT	100 FT	150 FT	200 FT	250 FT	300 FT	400 FT	500+ FT
208-240V, SINGLE PHASE PACKAGES (CONTROL PANEL OPTIONAL)											
2	8400A	-	\$2,330	-	\$2,915	\$3,135	\$3,346	\$3,591	\$4,757	\$8,972	Inquire
3	3.1A	-	\$3,253	-	\$3,778	\$4,027	\$4,959	\$5,322	\$5,673	\$9,206	Inquire
5	5.1A	-	-	-	\$5,154	\$6,061	\$6,793	\$8,333	\$10,473	\$12,581	Inquire
208-240V, SINGLE PHASE PACKAGES (CONTROL PANEL OPTIONAL)											
2	U2.3A	-	\$3,954	-	\$4,231	\$4,774	\$5,087	\$5,881	\$6,452	\$8,222	Inquire
3	U3.3A	-	\$4,540	-	\$4,824	\$5,344	\$5,949	\$6,196	\$8,060	\$8,583	Inquire
5	U5.3A	-	-	-	\$5,106	\$5,871	\$6,689	\$7,618	\$11,086	\$12,722	Inquire

- Product Notes:
- 1. Prices in bold have quick disconnect installed on power cords.
 - 2. Part number is the model combined with cord length (ex. U2.3A050).
 - 3. "A" models include the motor unit only and do not include a float or bottom screen.
 - 4. 460 - 480V, three phase option available for special order in approved locations only. Contact Kasco for details.
 - 5. The correct control panel will depend on the voltage of the unit and if lights are being used. See page 62.



RobustAire™ Small Cabinet

ROBUSTAIRE™ DIFFUSED AERATION

Move & Aerate Large Volumes of Water


Restore your water's natural ecosystem by adding mixing and movement with RobustAire™. A shore-mounted compressor pushes air through self-weighted lines to a diffuser at the bottom of the pond, lake, or tank. This induces oxygen transfer and beneficial mixing to prevent weed overgrowth, algae, unpleasant odors, fish kills, and other issues.



Packages include dual-loop diffuser(s), compressor(s), and compressor cabinet. Some models include SureSink Weighted Tubing.

Patented AireGuard Cabinet Technology revolutionizes air movement for superior cooling and less maintenance.

Dual-loop diffuser assembly will not clog, includes strain relief, and will land right-side up every time.



Dual-action
Filtering Removes
Dust and Debris



Reliable in
Tough Outdoor
Conditions



Cabinet Design
Ensures Quiet
Operation



Filter Minder
Turns Red When
Cleaning is Needed



ROBUSTAIRE™

SMALL DIFFUSED AERATION SYSTEMS

- Includes 1-3 dual-loop diffuser assemblies, 1 compressor, small cabinet, and SureSink Weighted Tubing
- Cabinet can be mounted on the ground or on a vertical structure using the optional mounting bracket
- Ideal for small to mid-size ponds and lakes
- Remote manifold available for installations far from power



Small Cabinet with Patented AireGuard Cabinet Technology



Dual-loop Diffuser Provides Efficient Water Movement



Filter Maintenance Indicator for Easy Maintenance



Lifetime Warranty - Diffuser & Cabinet
15-Year Warranty - Tubing
3-Year Warranty - Compressor
2-Year Warranty - Compressor Piston Cups & Cylinders

PART NUMBER		CABINET	NUMBER OF DIFFUSERS	WEIGHTED TUBING	COMPRESSOR	MSRP	REMOTE MANIFOLD MSRP
120V	208-240V						
RA1	RAH1	Small Cabinet	1	100 ft. 3/8 in. Tubing	(1) 1/4HP Compressor	\$3,015	\$3,315
RA1-NC	RAH1-NC	No-Cabinet	1	100 ft. 3/8 in. Tubing	(1) 1/4HP Compressor	\$1,631	\$1,931
RA2	RAH2	Small Cabinet	2	200 ft. 3/8 in. Tubing	(1) 1/4HP Compressor	\$3,576	\$3,876
RA2-NC	RAH2-NC	No-Cabinet	2	200 ft. 3/8 in. Tubing	(1) 1/4HP Compressor	\$2,412	\$2,712
RA3	RAH3	Small Cabinet	3	300 ft. 3/8 in. Tubing	(1) 1/2HP Compressor	\$4,353	\$4,653
RA3-NC	RAH3-NC	No-Cabinet	3	300 ft. 3/8 in. Tubing	(1) 1/2HP Compressor	\$3,134	\$3,434
DOUBLE PISTON (DP) SYSTEM							
RA2DP	RAH2DP	Small Cabinet	2	200 ft. 3/8 in. Tubing	(1) 1/2HP Compressor	\$3,840	\$4,140
RA2DP-NC	RAH2DP-NC	No-Cabinet	2	200 ft. 3/8 in. Tubing	(1) 1/2HP Compressor	\$2,589	\$2,889

Product Notes:

1. Small Cabinets are ground-mount standard, but can be mounted off the ground on post or similar structure with available mounting bracket. See page 56.
2. Small Cabinet systems include 3/8 in. tubing as standard but will also work with 5/8 in. tubing. See page 56.
3. If less tubing is needed, subtract retail price of the rolls not needed. If more rolls are needed, order more rolls as separate line items.
4. Kasco recommends 5/8 in. tubing for any run longer than 300 ft.
5. Remote manifold systems allow installation long distances from power. These systems include remote valve manifold and valve box.
6. No-Cabinet systems include mounting bracket with cooling fan.
7. Replacement cabinet available. Includes air compressor but no tubing or diffusers. Call Kasco for details.

ROBUSTAIRE™

MEDIUM DIFFUSED AERATION SYSTEMS

- Includes 4-6 dual-loop diffuser assemblies, 2 compressors, and medium cabinet (SureSink Weighted Tubing not included)
- Cabinet is ground-mount only
- Ideal for mid-size ponds and lakes
- Remote manifold available for installations far from power



Medium Cabinet with Patented AireGuard Cabinet Technology



Dual-loop Diffuser Provides Efficient Water Movement



Filter Maintenance Indicator and External Gauges



Lifetime Warranty - Diffuser & Cabinet
15-Year Warranty - Tubing
3-Year Warranty - Compressor
2-Year Warranty - Compressor Piston Cups & Cylinders

PART NUMBER		CABINET	NUMBER OF DIFFUSERS	WEIGHTED TUBING	COMPRESSOR	MSRP	REMOTE MANIFOLD MSRP
120V	208-240V						
RA4	RAH4	Medium Cabinet	4	Tubing Not Included	(2) 1/2HP Compressors	\$5,976	\$6,576
RA5	RAH5	Medium Cabinet	5	Tubing Not Included	(2) 1/2HP Compressors	\$6,307	\$6,907
RA6	RAH6	Medium Cabinet	6	Tubing Not Included	(2) 1/2HP Compressors	\$6,639	\$7,239

- Product Notes:
1. Medium Cabinets are ground-mount only. Mount cabinet on a dry, flat surface away from areas that may flood.
 2. Accommodates 3/8 in. and 5/8 in. weighted tubing, but must be ordered separately. See page 56.
 3. Kasco recommends 5/8 in. tubing for any run longer than 300 ft.
 4. Tubing accessories such as fitting kits and connector kits are available. See page 56.
 5. Remote manifold systems allow installation long distances from power. These systems include remote valve manifold and valve box.
 6. Replacement cabinet available. Includes air compressor but no tubing or diffusers. Call Kasco for details.



Kasco's experienced team of experts will help you select the right system for your application.

ROBUSTAIRE™

LARGE DIFFUSED AERATION SYSTEMS

- Includes 7-12 dual-loop diffuser assemblies, 3-4 compressors, and large cabinet (SureSink Weighted Tubing not included)
- Cabinet is ground-mount only
- Ideal for large industrial or recreational lakes
- Remote manifold available for installations far from power



Large Cabinet with
Patented AireGuard
Cabinet Technology



Dual-loop Diffuser Provides
Efficient Water Movement



Filter Maintenance Indicator
and External Gauges



Lifetime Warranty - Diffuser & Cabinet
15-Year Warranty - Tubing
3-Year Warranty - Compressor
2-Year Warranty - Compressor Piston Cups & Cylinders

PART NUMBER		CABINET	NUMBER OF DIFFUSERS	WEIGHTED TUBING	COMPRESSOR	MSRP	REMOTE MANIFOLD MSRP
120V	208-240V						
RA7	RAH7	Large Cabinet	7	Tubing Not Included	(3) 1/2HP Compressors	\$10,625	\$11,625
RA8	RAH8	Large Cabinet	8	Tubing Not Included	(3) 1/2HP Compressors	\$10,946	\$11,946
RA9	RAH9	Large Cabinet	9	Tubing Not Included	(3) 1/2HP Compressors	\$11,300	\$12,300
RA10	RAH10	Large Cabinet	10	Tubing Not Included	(4) 1/2HP Compressors	\$13,023	\$14,023
RA11	RAH11	Large Cabinet	11	Tubing Not Included	(4) 1/2HP Compressors	\$13,356	\$14,356
RA12	RAH12	Large Cabinet	12	Tubing Not Included	(4) 1/2HP Compressors	\$13,677	\$14,677

Product Notes:

1. Large Cabinets are ground-mount only. Mount cabinet on a dry, flat surface away from areas that may flood.
2. Accommodates 5/8 in. weighted tubing, but must be ordered separately. See page 56.
3. Kasco recommends 5/8 in. tubing for any run longer than 300 ft.
4. Tubing accessories such as fitting kits and connector kits are available. See page 56.
5. Remote manifold systems allow installation long distances from power. These systems include remote valve manifold and valve box.
6. Replacement cabinet available. Includes air compressor but no tubing or diffusers. Call Kasco for details.



Kasco's experienced team of
experts will help you select the
right system for your application.

ROBUSTAIRE™ SYSTEM COMPARISON

SMALL, MEDIUM, AND LARGE CABINETS

Below is a chart that compares details for Kasco's Small, Medium, and Large Cabinet Systems. Use these details to determine which system is best for your application.

All cabinets feature quiet operation, external maintenance indicators, easy-to-remove panels, and blend seamlessly with the environment.



SMALL CABINET
(RA 1-3)



MEDIUM CABINET
(RA 4-6)



LARGE CABINET
(RA 7-12)

CABINET DIMENSIONS

(L) 22 - 7/16 in.
(W) 16 - 15/16 in.
(H) 13 - 3/8 in.

(L) 25 - 7/8 in.
(W) 20 - 11/16 in.
(H) 19 - 5/8 in.

(L) 42 - 1/8 in.
(W) 20 - 11/16 in.
(H) 19 - 5/8 in.

NUMBER OF DIFFUSERS

1, 2, or 3

4, 5, or 6

7, 8, 9, 10, 11, or 12

NUMBER AND SIZE OF COMPRESSORS

(1) 1/4 or 1/2HP

(2) 1/2HP

(3 or 4) 1/2HP

TUBING DIAMETER

Includes 3/8 in. tubing.
Can accommodate 5/8 in. tubing (ordered separately).

Tubing ordered separately.
Accommodates 3/8 in. or 5/8 in. tubing.

Tubing ordered separately.
Accommodates 3/8 in. or 5/8 in. tubing.

AIREGUARD CABINET TECHNOLOGY (PATENTED)

✓

✓

✓

TYPICAL APPLICATION

Small to mid-size ponds and lakes

Mid-size ponds and lakes

Large recreational or industrial lakes

CABINET MOUNTING

Ground-mount standard.
Mounting bracket available with part number 774300.

Ground-mount only.

Ground-mount only.



HOME SERIES DIFFUSED AERATION

A Water Quality Boost for Backyard Ponds


Kasco Home Series Diffused Aeration Systems provide beneficial movement from the bottom up to improve water quality in backyard ponds. Using a shore-mounted compressor, air is pumped through tubing lines to a single-loop diffuser on the pond bottom. This continuous mixing prevents weed overgrowth, algae, unpleasant odors, and other issues.



Packages include single-loop diffuser(s), 1/4HP compressor, stainless steel cabinet, and SureSink Weighted Tubing. Optional mounting bracket available separately.

Cabinet design ensures quiet operation to peacefully blend with backyard environment.

Single-loop diffuser assembly will not clog, includes strain relief, and is self-weighted to land right-side up every time.



Cabinet Design
Ensures Quiet
Operation



Eliminates
Overgrowth, Algae
Buildup, and More



Easy Set-up,
Installation, and
Maintenance



Reliable in
Tough Outdoor
Conditions



HOME SERIES

DIFFUSED AERATION

- Includes 1-2 single-loop diffuser assemblies, 1 compressor, 1 cabinet, and SureSink Weighted Tubing
- Cabinet is stainless steel for longevity in outdoor conditions
- Cabinet can be mounted on the ground or on a vertical structure using the optional mounting bracket
- Quiet operation allows system to blend with backyard environment



Home Series Diffused Aeration Cabinet



Single-loop Diffuser Provides Efficient Water Movement



Ideal for Ponds up to 2 acres and With Less Than 20 ft. of Depth



Lifetime Warranty - Diffuser
15-Year Warranty - Tubing
2-Year Warranty - Cabinet, Compressor, & All External Parts

PART NUMBER	CABINET	NUMBER OF DIFFUSERS	WEIGHTED TUBING	COMPRESSOR	VOLT (V)	MSRP
DA1	Home Series	1	(1) 100 ft. roll of 3/8 in. tubing	(1) 1/4HP Compressor	120	\$1,750
DAH1	Home Series	1	(1) 100 ft. roll of 3/8 in. tubing	(1) 1/4HP Compressor	208-240	\$1,750
DA2	Home Series	2	(2) 100 ft. rolls of 3/8 in. tubing	(1) 1/4HP Compressor	120	\$1,950
DAH2	Home Series	2	(2) 100 ft. rolls of 3/8 in. tubing	(1) 1/4HP Compressor	208-240	\$1,950

Product Notes:

1. Home Series cabinets are ground-mount standard. Mounting Bracket available separately with part number 774440. See page 56.

SIZING RECOMMENDATIONS

Use this table to determine if a DA1 (1 diffuser) or DA2 (2 diffusers) is needed based on pond size and depth.

POND SIZE	DA1	DA2
	POND DEPTH	POND DEPTH
1/4 Acre	6 - 8 ft.	3 - 6 ft.
1/2 Acre	9 - 12 ft.	6 - 8 ft.
1 Acre	13 - 20 ft.	9 - 12 ft.
2 Acres	-	13 - 20 ft.



Kasco's experienced team of experts will help you select the right system for your application.

SYSTEM COMPARISON

HOME SERIES VS ROBUSTAIRE™ SMALL CABINETS

Below is a chart comparing details for Kasco Home Series systems and RobustAire™ Small Cabinet systems. Use these details to determine which system is best for your application.



HOME SERIES
(DA 1-2)



ROBUSTAIRE™ SMALL CABINET
(RA 1-3)

CABINET DIMENSIONS

(L) 12 - 1/2 in.
(W) 11 in.
(H) 11 - 1/2 in.

(L) 22 - 7/16 in.
(W) 16 - 15/16 in.
(H) 13 - 3/8 in.

CABINET COLOR AND MATERIAL

Silver
(Stainless Steel)

Natural Brown
(Aluminum with Powder-coat Finish)

NUMBER AND STYLE OF DIFFUSERS

1 or 2
Single-loop Diffusers

1, 2, or 3
Dual-loop Diffusers

SIZE OF COMPRESSOR

1/4HP

1/4 or 1/2HP

TUBING DIAMETER

Includes 3/8 in. tubing
(Does not accommodate 5/8 in. tubing).

Includes 3/8 in. tubing.
Can accommodate 5/8 in. tubing (ordered separately).

AIREGUARD CABINET TECHNOLOGY (PATENTED)

x

✓

TYPICAL APPLICATION

Small backyard ponds

Small to mid-size ponds and lakes

CABINET MOUNTING

Ground-mount standard.
Mounting bracket available with
part number 774440.

Ground-mount standard.
Mounting bracket available with
part number 774300.

DIFFUSED AERATION

ACCESSORIES

The table below lists accessories and replacement items available for RobustAire™ and Home Series Diffused Aeration Systems.



*RobustAire™ Small Cabinet
Mounting Bracket*

PART NUMBER	DESCRIPTION	SYSTEM	INCLUDES	MSRP
772100	RobustAire dual-loop diffuser assembly	RobustAire	(1) Diffuser assembly, (1) 3/8 in. barbed fitting, and (1) 5/8 in. barbed fitting	\$354
774300	RobustAire Small Cabinet mounting bracket	RobustAire (RA1-3 only)	(1) Mounting bracket and assembly hardware	\$350
772200	Home Series single-loop diffuser assembly	Home Series	(1) Diffuser assembly and (1) 3/8 in. barbed fitting	\$140
774440	Home Series Cabinet mounting bracket	Home Series	(1) Mounting bracket and assembly hardware	\$60
773380	3/8 in., 100 ft. roll of weighted tubing	RobustAire Home Series	Weighted tubing and fittings to attach to compressor, diffuser assembly, and extending tubing length	\$113.50
773385	3/8 in., 500 ft. roll of weighted tubing	RobustAire Home Series	Weighted tubing. 500 ft. rolls do not include fittings	\$500
773300	3/8 in. tube fitting kit (included in part number 773380)	RobustAire Home Series	(1) 3/8 in. x 3/8 in. barbed connector and (2) 3/8 in. hose clamps	\$8
773310	3/8 in. connector kits (10 pack)	RobustAire	(10) 3/8 in. x 3/8 in. barbed connectors and (20) 3/8 in. hose clamps	\$57
773580	5/8 in., 100 ft. roll of weighted tubing	RobustAire	Weighted tubing and fittings to attach to compressor, diffuser assembly, and extending tubing length	\$160.50
773585	5/8 in., 500 ft. roll of weighted tubing	RobustAire	Weighted tubing. 500 ft. rolls do not include fittings	\$760
773500	5/8 in. tube fitting kit (included in part number 773580)	RobustAire	(1) 5/8 in. x 5/8 in. barbed connector, (2) 3/8 in. x 5/8 in. barbed connectors, (2) 5/8 in. hose clamps, and (2) 3/8 in. hose clamps	\$19.67
773058	5/8 in. connector kits (10 pack)	RobustAire	(10) 5/8 in. x 5/8 in. barbed connectors and (20) 5/8 in. hose clamps	\$69
774323	Kit, barb, 3/8 MNPT x 5/8 Hose	RobustAire	(3) 3/8 MNPT x 5/8 in. barbed fitting (for use at cabinet)	\$30
774061	Kit, barb, 3/8 MNPT x 5/8 Hose	RobustAire	(6) 3/8 MNPT x 5/8 in. barbed fitting (for use at cabinet)	\$50



Dual-loop Diffuser

TEICHAIRE

COMPRESSORS

- 1/4, 1/2, and 3/4HP, 120V and 208-240V options
- Single phase
- Includes vibration mounts and 6 ft. power cord
- Quiet, oil-less piston compressors built for continuous duty, large aeration applications



Thermal Overload Protection
and Will Restart Under Load



3-Year Warranty - Motor
2-Year Warranty - Piston Cups & Cylinders



120V & 208-240V Models
Are UL & CSA Recognized



208-240V Models
Have CE Certification

PART NUMBER	HP	VOLT (V)	WEIGHT (LB)	AMP @ 0 PSI	AMP @ 20 PSI	MSRP
KM-60C	1/4	120	16	2.2	3.2	\$771
KM-60HC	1/4	208-240	16	1.1	1.6	\$771
KM-120C	1/2	120	19	3.0	4.0	\$992
KM-120HC	1/2	208-240	19	1.5	2.0	\$992
KM-200C	3/4	120	28	5.4	6.9	\$1,651
KM-200HC	3/4	208-240	28	3.1	3.7	\$1,651

Product Notes:

1. KM-60C, KM-60HC, KM-120C, and KM-120HC models include a Molex cord connector making them compatible with newer style RobustAire cabinets.
2. TeichAire compressors do not include the pressure relief valve, brass elbow, or air filter assembly. Please reuse these components from the old compressor.



POND PROBIOTICS

BENEFICIAL BACTERIA

Pond Probiotics are a safe, non-chemical approach to water quality management and produce a healthy, balanced ecosystem with its highly concentrated, unique blend of naturally occurring bacteria and enzymes. No irrigation restrictions or permit required.



Available as Quick-Dissolving Powder, Pucks, and Time-releasing Blocks



Water Must Be 55° F or Warmer



Removes Pond Scum and Floating Particles



Eliminates Waste, Dead Grass, and Foul Odors



Safe for People, Pets, and Livestock

PART NUMBER	DESCRIPTION	CONTENTS TREAT	MSRP
MZ8	(1) 8 oz. WS bag	Up to 1/2 acre-ft.	\$14
MZ8C	(40) 8 oz. WS bags (case)	Up to 20 acre-ft.	\$545
MZ25	25 lb. bag of bulk powder in pail (no WS bags)	Up to 25 acre-ft.	\$600
MZMP7	Muck Pucks - 7 lb. pail with 266 pucks	Up to 10 ft. ² per puck	\$98
MZMB5	Muck Block - (1) 6 lb. block	Up to 6 acre-ft.	\$92

- Product Notes:
- 1. WS = Water soluble bag.
 - 2. One acre-foot (1 acre of surface area with 1 ft. of depth) = 325,851 gallons.
 - 3. To determine gallons: length (ft.) x width (ft.) x avg. water depth (ft.) x 7.48 = gallons.



Kasco Pond Probiotic
Muck Pucks



BEFORE



AFTER

Quick-Dissolving Powder

For small ponds and water gardens. Reapply every 2-3 weeks.



Muck Pucks

For small or medium ponds, as spot treatments. Reapply every 2-3 weeks.



Muck Blocks

For medium ponds, large ponds, or feeder streams. Reapply every 30 days.



Combine Pond Probiotics with a Kasco aeration or circulation method for maximum water quality results.



ACCESSORIES

Mounts, Control Panels, Protective
Sleeving, & Much More

Kasco offers a robust selection of accessories that complement our main product offering, increasing effectiveness and convenience of our product offerings. Accessory items are designed to help Kasco products better fit your specific application and improve your experience.



Designed to enhance performance and simplify installation across a variety of Kasco products.

Wide range of accessories available to customize systems for specific needs and environments.

Improves product performance and convenience for a more efficient, tailored setup.

UNIT MOUNTING OPTIONS

MOUNTING KITS

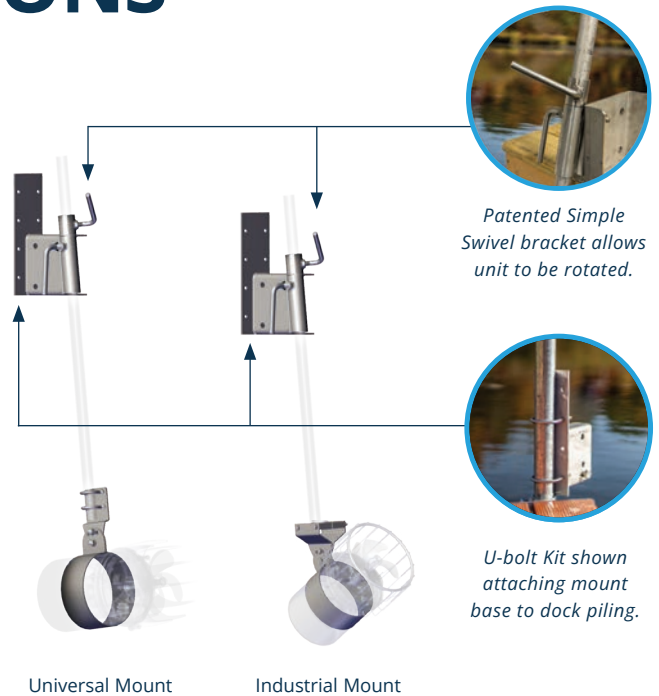
Secure your Kasco AquatiClear™ or De-icer to a dock, pier, walkway, or other in-water structure. Determine your depth, angle, and direction of water flow to achieve desired results. Optional U-bolt Kit allows mount kit to attach to dock piling without drilling into structure. Mounts include a lifetime warranty.

Universal Mount Kits

- For 1/2, 3/4, and 1HP units
- Requires 1 in. / 25 DN nominal pipe, supplied by customer

Industrial Mount Kits

- For 1/2, 3/4, and 1HP units
- Requires 1.5 in. / 40 DN nominal pipe, supplied by customer



PART NUMBER	DESCRIPTION	UNITS COMPATIBLE	MSRP
243478	Universal Mount with patented Simple Swivel bracket (Includes all mount assembly hardware)	1/2, 3/4, and 1HP units	\$465
243479	Industrial Mount with patented Simple Swivel bracket (Includes all mount assembly hardware)	1/2, 3/4, and 1HP units	\$739
997108K	U-bolt Kit (Each kit includes 2 U-bolts and associated hardware)	1/2, 3/4, and 1HP units	\$18

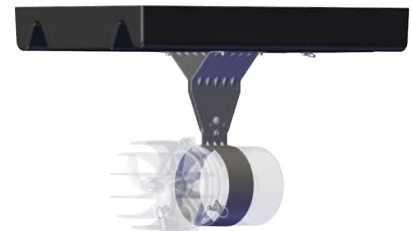
Product Notes:

1. Pipes should not exceed 10 ft. and can be threaded or unthreaded (supplied by customer).
2. Universal and Industrial Mounts require (8) 5/16 in. customer-supplied lag screws to mount base plate to dock.
3. To install mount without drilling into dock, use available U-bolt Kit instead of lag screws.
4. Industrial Mounts are recommended for units in harsh environments.
5. Universal Mounts require (1) U-bolt Kit, Industrial Mounts require (2) U-bolt Kits.

HORIZONTAL FLOAT

Suspend your Kasco AquatiClear™ below the water's surface and safely anchor it to shore. Using stainless steel hardware and components, the float accommodates 1/2, 3/4, and 1HP units. Includes a 3-year warranty.

- 3 tie-down loops for secure installation
- Power cord strain relief clip
- 3 angles of unit orientation



PART NUMBER	DESCRIPTION	UNITS COMPATIBLE	MSRP
213001	Horizontal Float with tie-down loops	1/2, 3/4, and 1HP units	\$535

CONTROL PANELS

Control panels allow energy-saving automatic control of your Kasco unit. Select your desired settings, and the control panel will handle the rest.

- Panels are included for J and VFX Series Fountains
- Panels are optional for surface aerators except 2.3, 3.3, and 5.3HP units (non-"U" units)
- Surface aerator control panels will depend on voltage of the unit and if lights are used (refer to the table below)



PART NUMBER	MODEL	USE WITH				CONTROLLED FUNCTION	BASED ON	GROUND FAULT PROTECTION	MSRP
		DE-ICER (Optional)	FOUNTAIN (J & VFX SERIES) (Included)	SURFACE AERATOR (Optional)	AQUATICLEAR (Optional)				
120V, SINGLE PHASE UNITS									
110225	C-10	1/2, 3/4, 1HP	-	-	-	Unit only	Thermostat	N/A	\$150
120350	C-20	1/2, 3/4, 1HP	-	-	-	Unit only	Timer and thermostat	N/A	\$335
125250	C-25	-	1/2**, 3/4, 1HP	1/2, 3/4, 1HP	1/2, 3/4, 1HP	Unit and lights	(1) Timer for unit (1) Photocell for lights	6-milliamp (human-rated)	\$420
208-240V, SINGLE PHASE UNITS									
176006	C-85	-	3/4, 1, 2HP	3/4, 1, 2HP <i>with lights</i>	-	Unit and lights	(1) Timer for unit (1) Timer for lights	6-milliamp (human-rated)	\$2,369
176091	C-95	-	3, 5HP	3, 5HP <i>with lights</i>	-	Unit and lights	(1) Timer for unit (1) Timer for lights	6-milliamp (human-rated)	\$2,366
176332	C-220	3/4, 1HP	-	3/4, 1HP, 2HP	3/4, 1HP	Unit only	(1) Timer for unit	6-milliamp (human-rated)	\$1,350
176333	C-230	-	-	3, 5HP	-	Unit only	(1) Timer for unit	6-milliamp (human-rated)	\$1,400
208-240V, THREE PHASE UNITS									
176210	CA-3235	-	-	2, 3, 5HP*	-	Unit only	(1) Timer for unit	30-milliamp (equipment-rated)	\$3,500
176200	CF-3235	-	2, 3, 5HP	2, 3, 5HP <i>with lights</i>	-	Unit and lights	(1) Timer for unit (1) Timer for lights	5-milliamp (human-rated)	\$4,450
176204	CF-3075	-	7.5HP***	-	-	Unit and lights	(1) Timer for unit (1) Timer for lights	5-milliamp (human-rated)	\$4,150

*2.3, 3.3, and 5.3HP surface aerators include a CA-3235 control panel. Control panels are optional for all other surface aerator models (including "U" models).

**1/2HP is only offered for VFX Series Fountains.

***7.5HP is only offered for J Series Fountains.

Product Notes:

1. Test GFCI every 30 days after unit installation.
2. For electrical wiring, follow all codes and consult qualified electrician.



NEVER enter the water with electrical equipment connected and / or in operation.

EXTRAS

Get the most from your Kasco unit with the accessories listed below. From strain reliefs and protective cord sleeves to quick disconnects, Kasco has what you need to keep your unit operating at its best.



Stainless Steel Protective Cord Sleeveing is available. Contact Kasco for pricing.

PART NUMBER	DESCRIPTION	MSRP
243609	AquatiClear™ Shallow Water Install Kit	\$125
636400	Optional 3-point strain relief conversion kit for 16-gauge through 10-gauge cords	\$140
636175	Quick disconnect added to 50 ft. or 100 ft. power cord for units (Quick disconnect comes standard on 100 ft. cords for all 1HP (120V), 2HP, 3.1HP, and 5.1HP units)	\$361
840303	3-light kit adapter for 3-piece sectional floats (For 2, 3, and 5HP Surface Aerators)	\$50.25
840306	6-light kit adapter for 3-piece sectional floats (For 2, 3, and 5HP Surface Aerators)	\$350
997108K	U-bolt Kit for Universal and Industrial Mount Kits allows installation without drilling into structure (each kit includes 2 U-bolts and associated hardware)	\$18
243465	Replacement anode for 1/2 in. motor shaft (1/2 - 1HP units)	\$18.87
840465	Replacement anode for 5/8 in. motor shaft (2 - 7.5HP units)	\$45
240170	Prop for 1/2HP Surface Aerators and De-icers	\$29.31
340125K	Prop for 3/4HP Surface Aerators and De-icers	\$35.89
440430	Prop for 1HP Surface Aerators and De-icers	\$55
240180	Prop for 1/2HP AquatiClear™ Circulators	\$40
340135	Prop for 3/4HP AquatiClear™ Circulators	\$50
440435	Prop for 1HP AquatiClear™ Circulators	\$60
240595K	2400VF Prop for 1/2HP VFX Fountains	\$32.15
340595K	3400VF Prop for 3/4HP VFX Fountains	\$37.80
440600K	4400VF Prop for 1HP VFX Fountains	\$69
821114	6-blade Prop for 2HP VFX Fountains	\$334
821124	6-blade Prop for 3 and 5HP VFX Fountains	\$325
Multiple	Protective cord sleeveing available for all cord lengths	Contact Kasco for pricing.
990926	Food grade mineral oil option	Contact Kasco for pricing.

WARRANTY INFORMATION

STANDARD WARRANTY

Kasco Marine, Inc. warrants products to be free from defects in material or workmanship under normal use and service. This warranty excludes damage to the equipment from improper handling or installation as well as damage caused by environmental factors (examples include but are not limited to: cuts in or crushing of the power cord, damage to mooring lines and ropes, foreign objects causing damage to props or motor shafts, and improper power feeds). The Kasco Marine, Inc. obligation under this warranty is limited to replacing or repairing, free of charge, any defective part within the warranty period.

All units sent back to the factory or authorized repair center should be accompanied by the repair form, found at kascomarine.com. Customer is responsible to pay shipping charges.

WARRANTY IS VOID IF

1. The product is not maintained according to the maintenance recommendations supplied in owner's manual.
2. The equipment is returned for repair without the power cord.
3. The unit, control panel, or power cord are altered in any way from the original shipment. Cuts in the power cord are not covered under warranty.
4. The equipment is damaged by unauthorized tampering.
5. The sacrificial zinc anode around the motor shaft shows significant deterioration (not maintained according to recommendations supplied in the owner's manual).

EXTENDED WARRANTY

The extended warranty is an additional 2 years beyond the 3-year warranty. See below for program details. The extended warranty must either be:

- Ordered at the same time and on the same P.O. as the unit.
 - *Please include the extended warranty as a separate line item.*
- OR
- Added to stocked units no more than 180 days after manufacture.
 - *To add an extended warranty to a stock unit, send a P.O. to Kasco with the appropriate extended warranty part number (see table below) and the serial number(s) of the warrantied units.*

Eligible Products:

- 2HP J Series Fountains
- 2 and 5HP VFX Fountains
- 2, 3, and 5HP Surface Aerators

HP	J SERIES FOUNTAINS	VFX FOUNTAINS	SURFACE AERATORS	MSRP
2		EW2F		\$1,000
3		EW3F		\$1,200
5		EW5F		\$ 1,450

WARRANTY PERIODS

(INCLUDES CONTROL PANEL)

J SERIES FOUNTAINS

- 3/4 and 1HP: 2 years
- 2HP: 3 years
- 3, 5, and 7.5HP: 5 years

VFX SERIES FOUNTAINS

- 1/2, 3/4, and 1HP: 2 years
- 2 and 5HP: 3 years

WATERGLOW LIGHTING

- RGB LED: 2 years
- Composite LED: 2 years
- Stainless Steel LED: 3 years
- RGBW40: 5 years
- Universal Lighting: 2 years

AQUATICLEAR™ CIRCULATORS

- 1/2, 3/4, and 1HP: 2 years

DE-ICERS

- 1/2, 3/4, and 1HP: 3 years

SURFACE AERATORS

- 1/2, 3/4, and 1HP: 2 years
- 2, 3, and 5HP: 3 years

ROBUSTAIRE™ DIFFUSED AERATION SYSTEMS

- Diffuser: Lifetime
- Cabinet: Lifetime
- Tubing: 15 years
- Compressor Motor: 3 years
- Compressor Piston Cup: 2 years
- Compressor Cylinder: 2 years

HOME SERIES DIFFUSED AERATION SYSTEMS

- Diffuser: Lifetime
- Cabinet: 2 years
- Tubing: 15 years
- Compressor Motor: 2 years
- Compressor Piston Cup: 2 years
- Compressor Cylinder: 2 years

REPLACEMENT (R) UNITS

- 1/2, 3/4, and 1HP: 2 years
- 2, 3, and 5HP: 3 years
- 7.5HP: 3 years

NOTE: Pricing and availability for replacement "R" units is available in distributor portal accounts.

DISTRIBUTOR TOOLS



Kasco Website
kascomarine.com



Distributor Portal
distributors.kascomarine.com



Online Training



Qualified Lead Routing



Dedicated Customer Service

MAP, PRODUCT RETURN, & REPAIR

MAP (MINIMUM ADVERTISED PRICING)

MAP on fountains, surface aerators, AquatiClear™ Circulators, De-icers, WaterGlow Lighting, RobustAire™, Home Series, and Pond Probiotics is full retail.

Prices are subject to change without notice and are not guaranteed for the entire year.

NEW OR UNUSED PRODUCT RETURN <https://kascomarine.com/products/repair-centers/>

If an item has not entered the water, it can be returned to Kasco:

1. Contact Kasco to receive an RMA number and RMA form.
2. Package the item(s) adequately (original packaging preferred) and return to Kasco with completed RMA form and RMA number on the shipping label or written on the box.

IMPORTANT

- 10% restocking fee will be applied to all returns.
- Additional fees may apply for partial returns.
- An item will not be accepted for return if it has been in the water.
- Kasco will not reimburse for product that was damaged during return shipment.
- Only new, clean, and unused items may be returned for credit.
- Items may not be returned after 6 months from the time of purchase.

REPAIR <https://kascomarine.com/products/repair-centers/>

Equipment can be shipped to Kasco or an authorized service center for a repair estimate. Contact us if you'd like to find an authorized repair center near you. Kasco aims to provide a free cost estimate as soon as possible. After customer approval, the repair can be made in just a few days.

- Please include upper pump housing or wire cage for aerators and De-icers.
- Kasco is not responsible for shipping damage from customer to Kasco.
- Do not send floats. Kasco will charge \$200 for float disassembly and cleaning.
- It is the responsibility of the customer to ship and pay freight to Kasco.

SHIPPING DETAILS

Kasco offers hassle-free logistical support to our customers. While we do accommodate shipment arranged by you or a third party, there are compelling benefits to allowing Kasco's Logistics Team to arrange all your shipments. We have negotiated extremely competitive rates with our preferred carriers and are excited to pass that savings along to you.

Additionally, all shipments arranged by Kasco are FOB destination, insured by us until they reach your location. In the event of loss or damage during shipping, simply notify our Customer Service Team and provide as much detail as possible, including photos of any damage. Once we have confirmed loss or damage, we will ship a replacement and take care of the claim. You can reach our Logistics Team at logistics@kascomarine.com.

FREIGHT QUOTES

Please email freight quotes to support@kascomarine.com and include:

- Shipping address
- Commercial or residential
- Offload or lift gate requirements
- Delivery notification contact info

NOTE: Some addresses are extended delivery areas and additional charges may apply. Quotes are estimates, valid for 30 days, and may vary.

MOTOR FREIGHT ONLY SHIPMENTS

2HP and larger units with power cords longer than 400 ft. ship motor freight only.

KASCO PATENTS

Scan the QR code below for a full list of Kasco patent and patent-pending information.





Kasco[®]

parwest.com | 714.893.1555 | sales@parwest.com
17952 Lyons Circle, Huntington Beach, CA U.S.A. 92647



PAR WEST

© 01/2026 Kasco Marine, Inc.